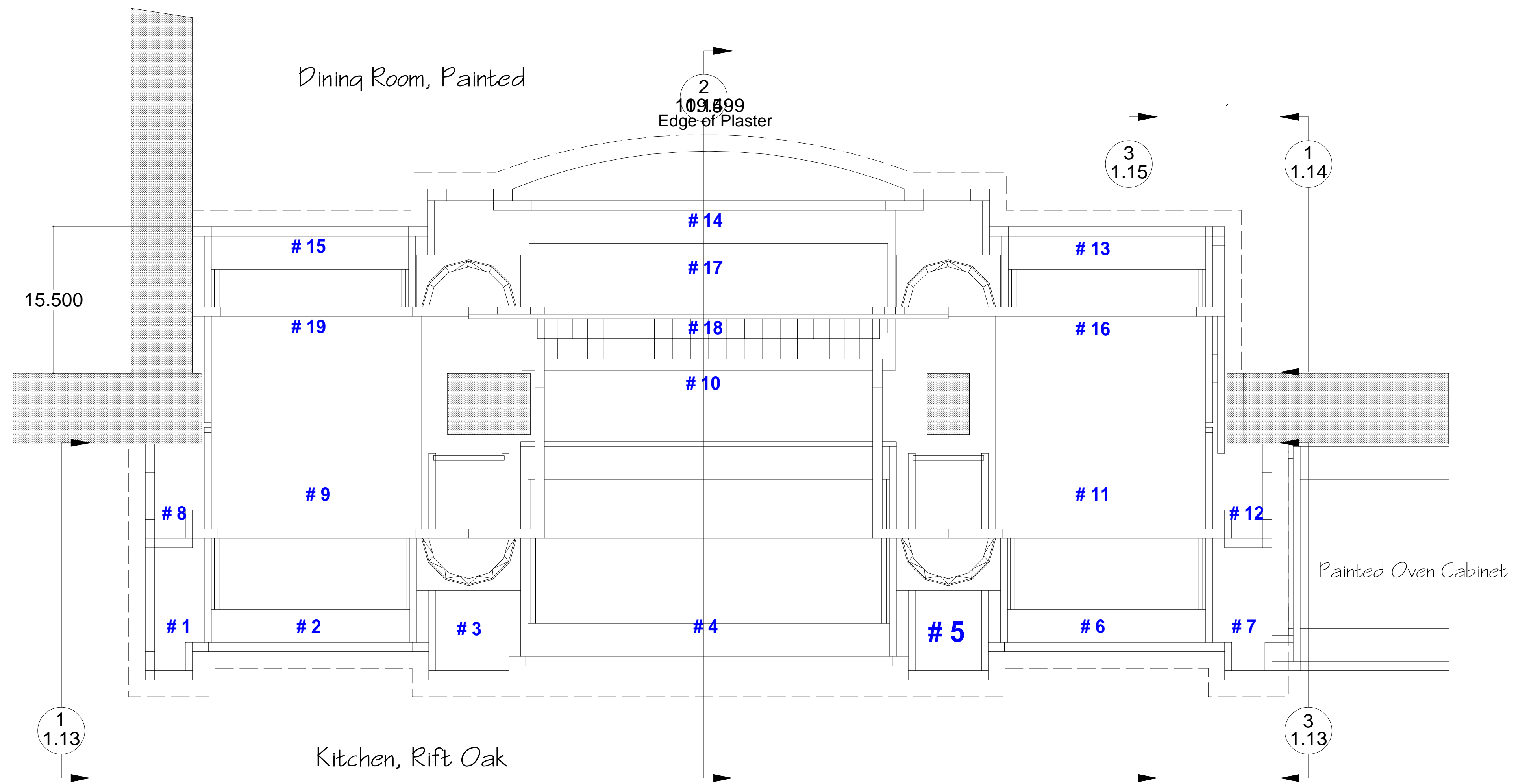
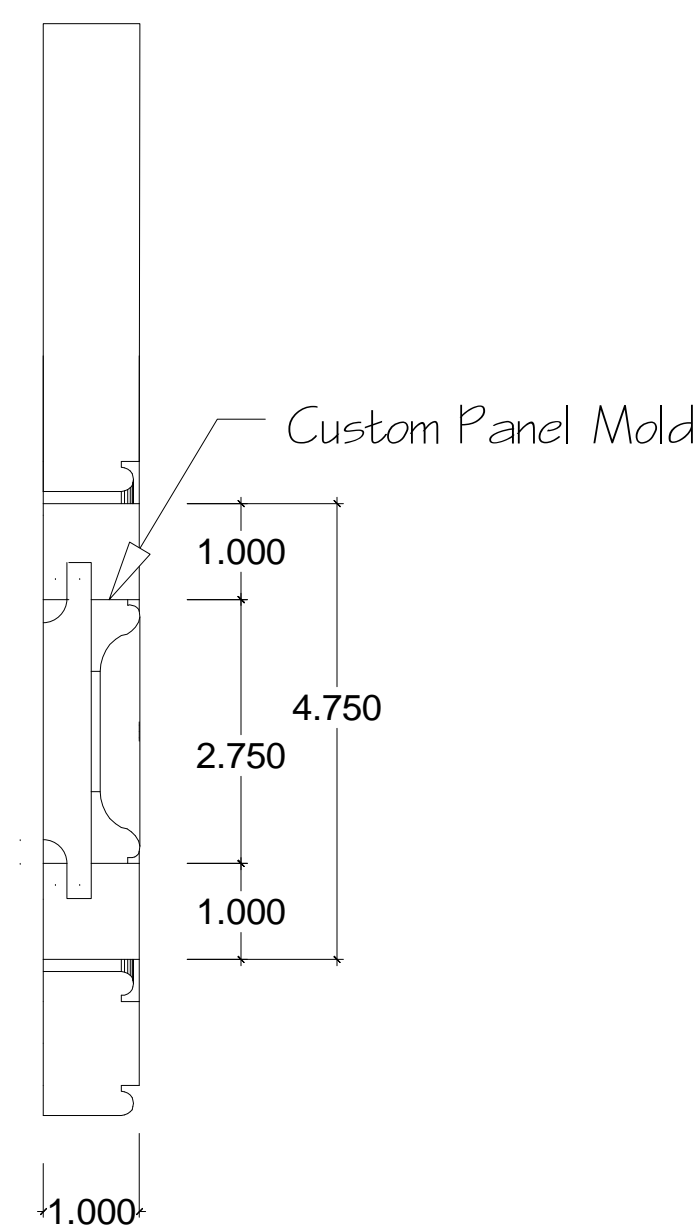


- NOTES**
1. Painted dining room cabinets, primed
  2. Painted upper cabinet interiors, color = ?
  3. Rift white oak kitchen cabinets.
  4. Oil rubbed bronze hinges on all doors.
  5. Ball catches on pass through doors.
- Molding Schedule, as drawn**
- Painted base cap, Forester F-64270
  - Cabinet baseboard, Forester F-24330
  - Chair rail, Forester F-15660
  - Countertop nosing, Forester F-85210
  - Dining room panel mold, Forester F-80540
  - Cove molding, Forester F-32220
  - Crown molding, Forester F-44361



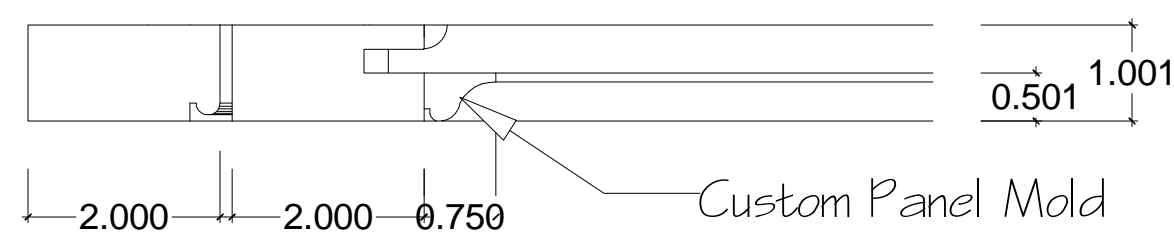
1 Kitchen Pass Through Plan  
1-1/2" = 1'-0"



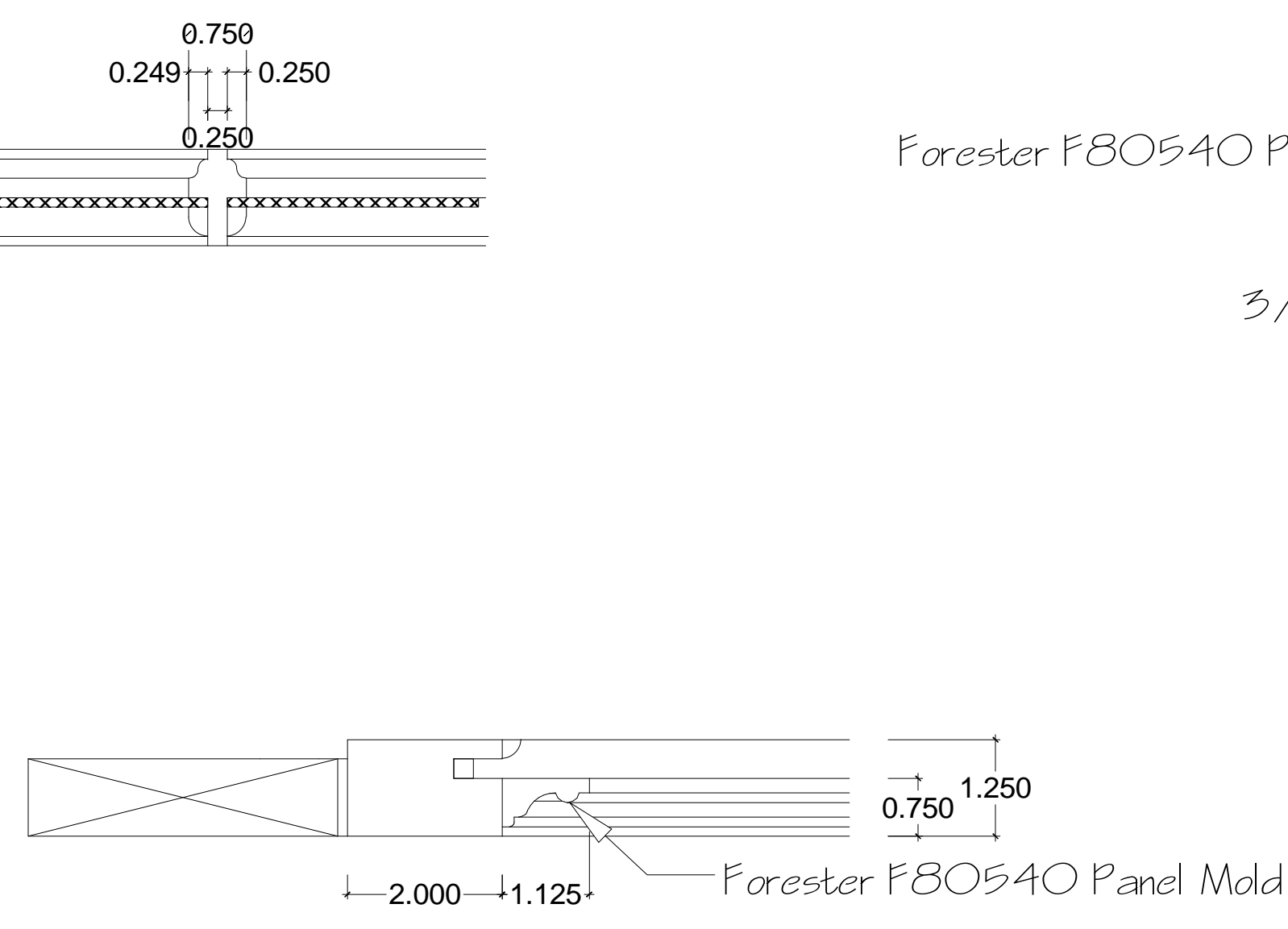
3 Detail At Kitchen Oak Drawer Faces  
Half Size



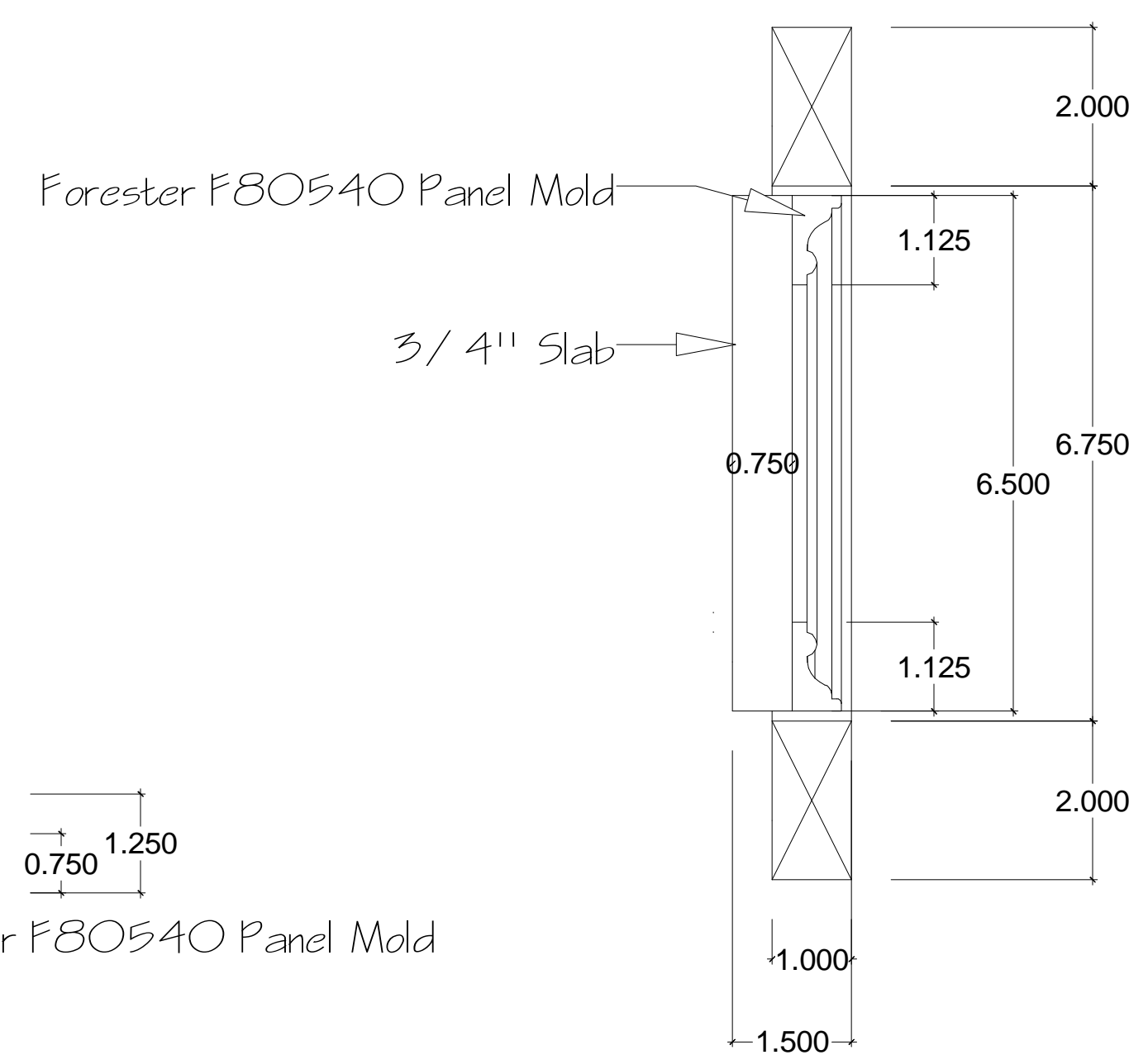
2 Detail At Glass Door  
Half Size



4 Detail At Kitchen Oak Doors  
Half Size



5 Detail At DR Lower Doors  
Half Size



6 Detail At DR Drawer Face  
Half Size

Traditional Woodworking LLC  
164 River Rd.  
Piermont, New Hampshire, 03779  
603-272-9324 FAX: 603-272-9030

McGray and Nichols  
Thomas Mt House  
Wilmot, NH

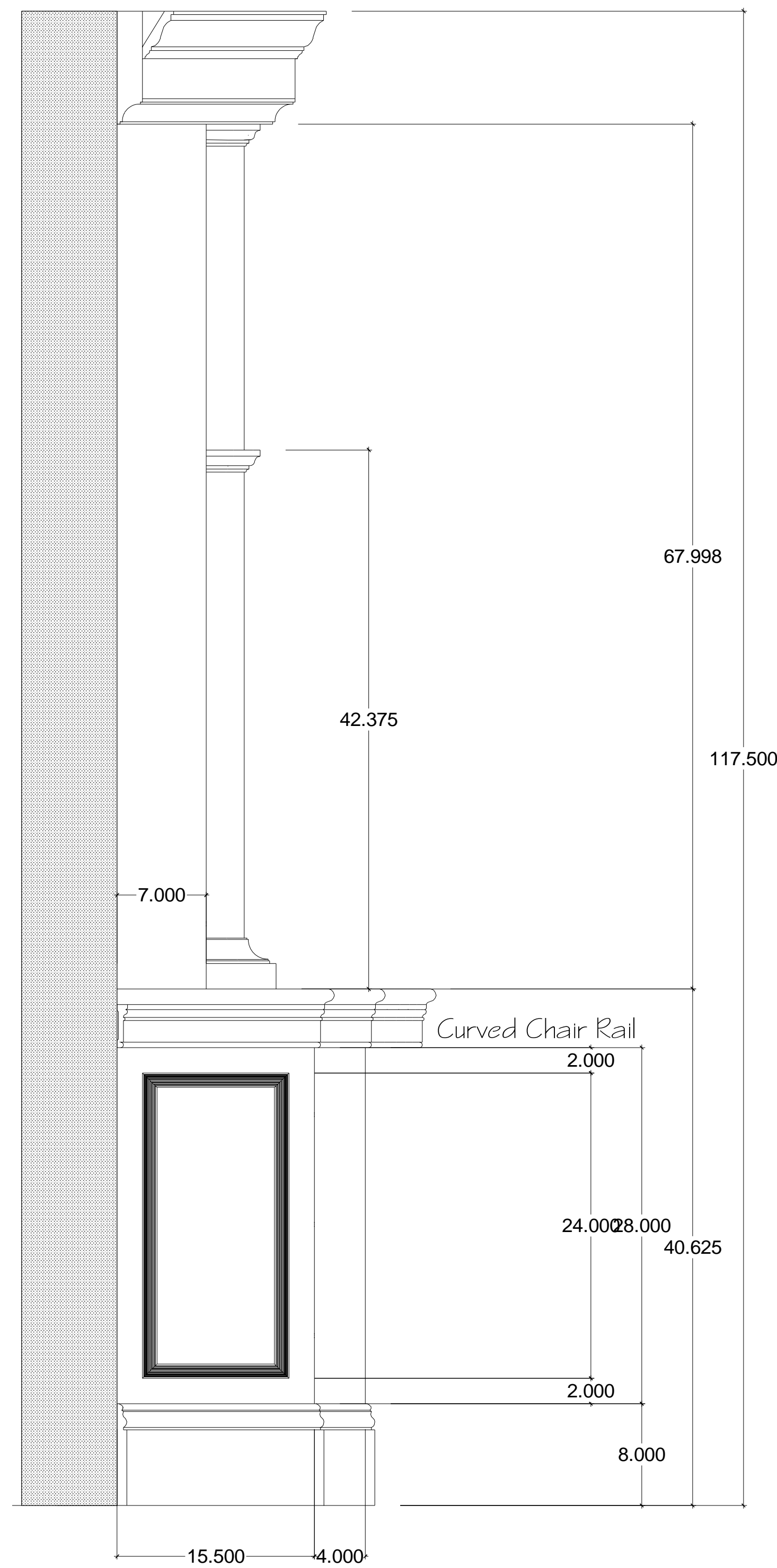
22 July 08  
Revised:

Kitchen/Dining  
Pass Through

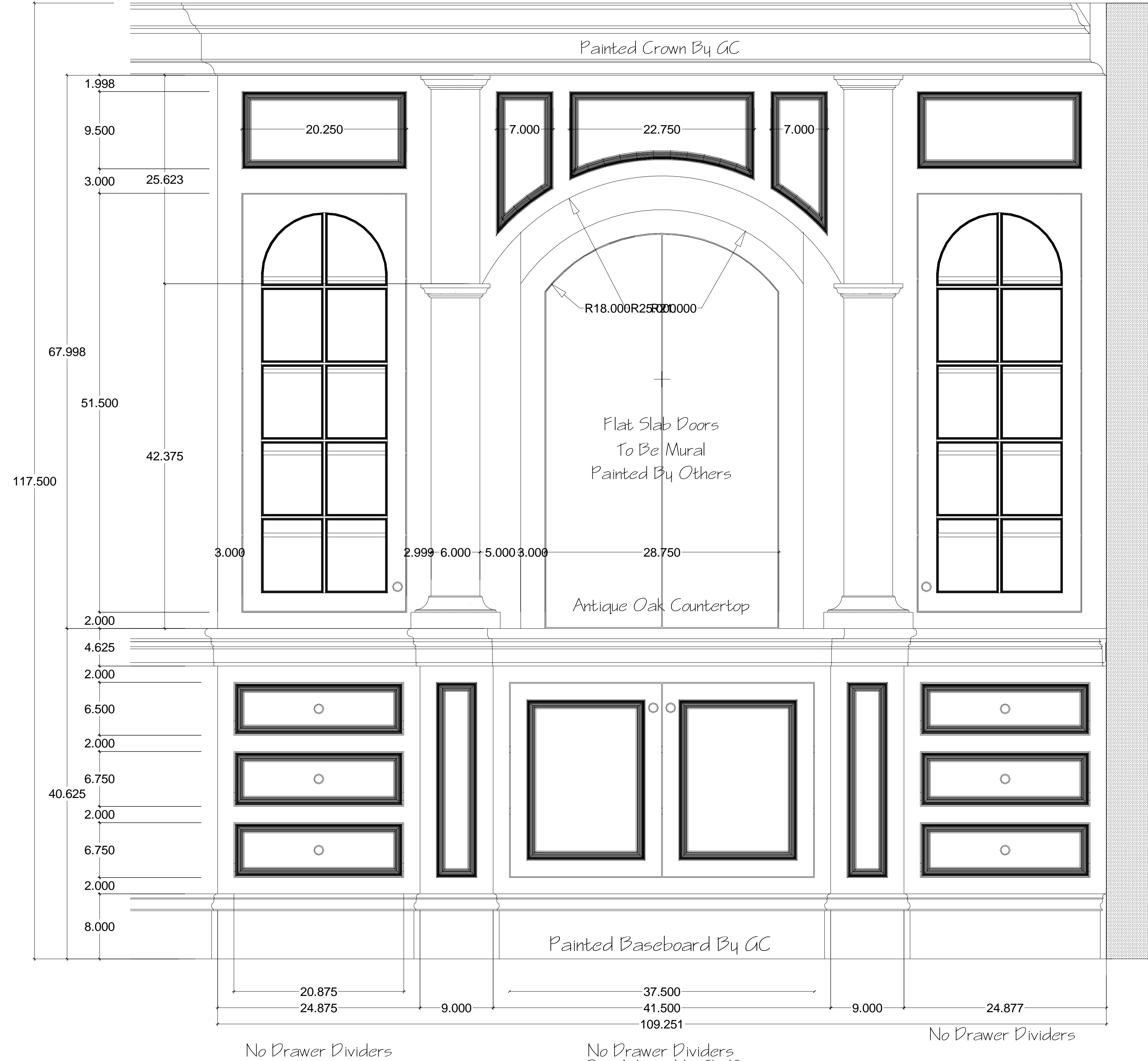
**D- 1.12**

Sheet 1 of 17





1 Dining Room Pass Through, Left End  
1-1/2" = 1'-0"



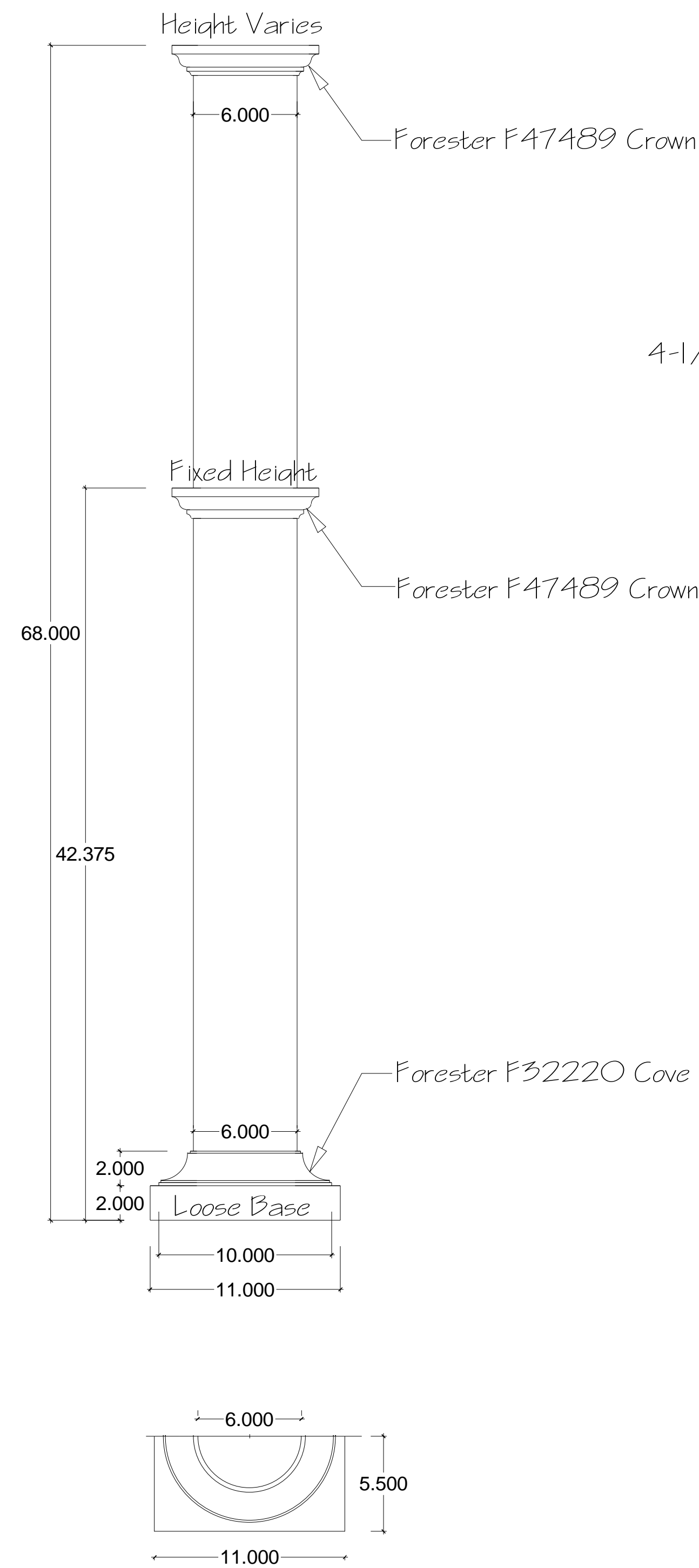
2 Dining Room Pass Through, Elevation  
1-1/2" = 1'-0"  
No Drawer Dividers  
No Drawer Dividers  
One Adjustable Shelf  
All Surfaces Primed/ Painted

Traditional Woodworking LLC  
164 River Rd.  
Piermont, New Hampshire, 03779  
603-272-9324 FAX: 603-272-9030

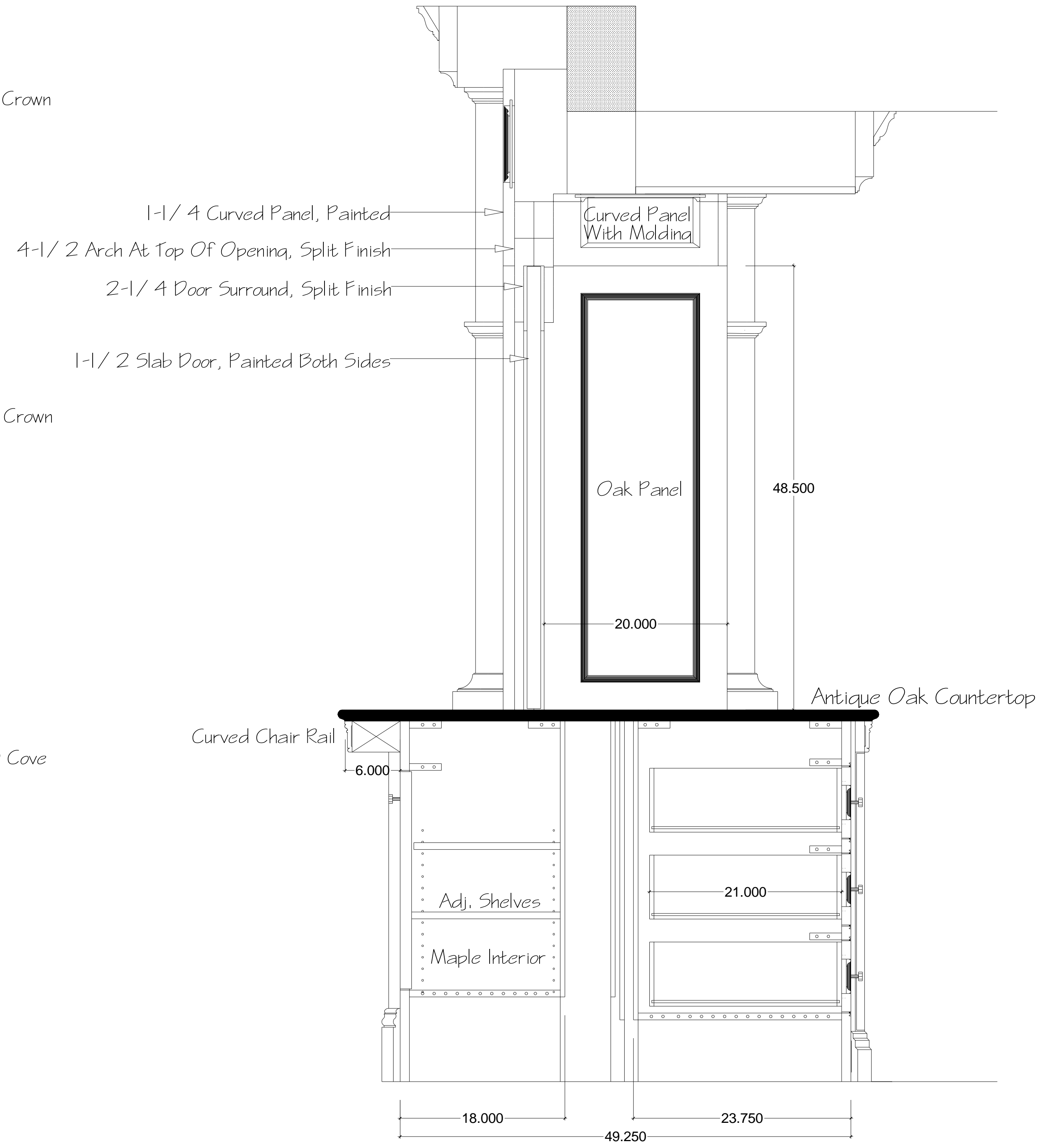
McGray and Nichols  
Thomas Mt House  
Wilmot, NH

22 July 08  
Revised:

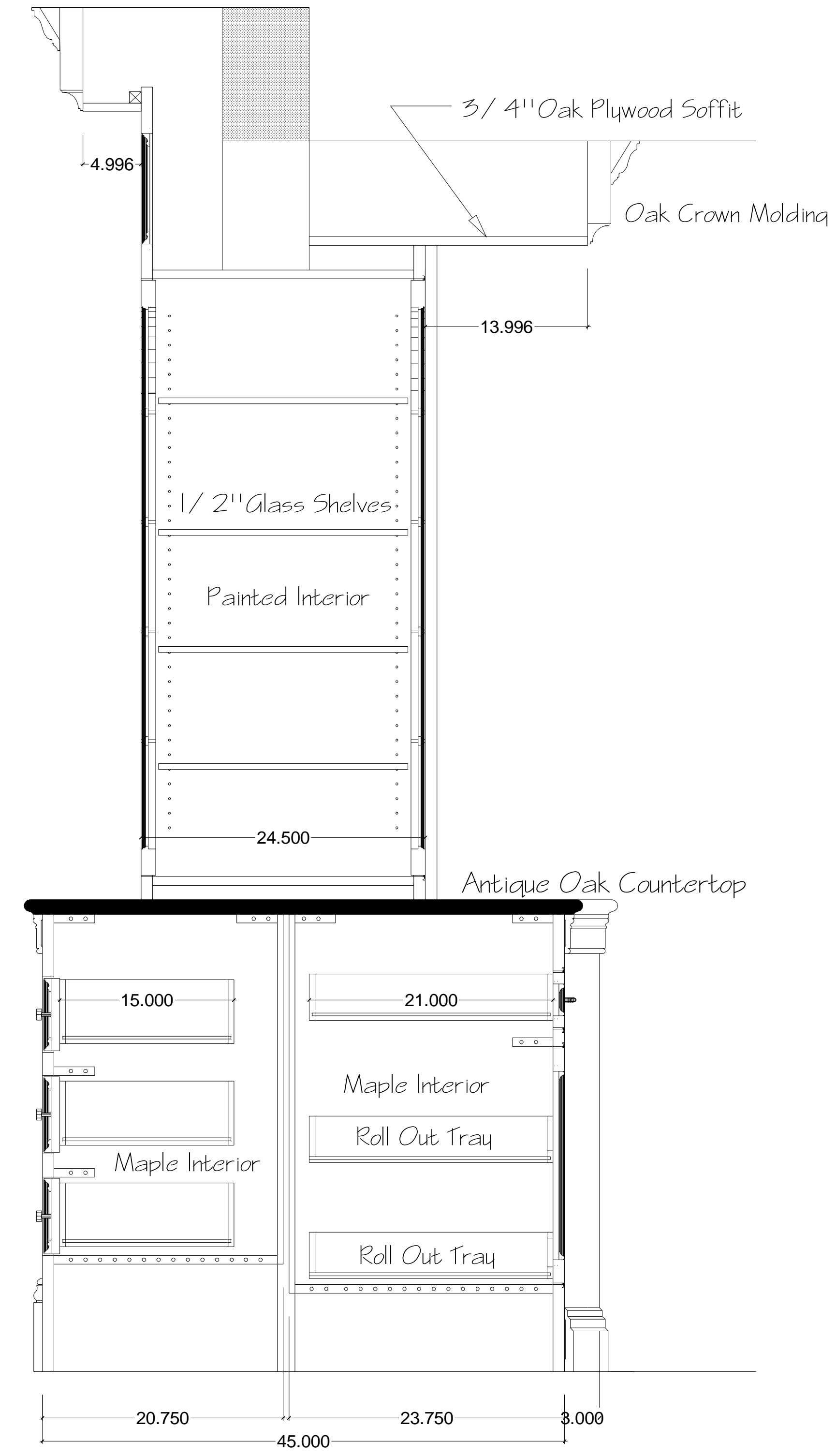
Dining Room  
Pass Through  
**D- 1.14**  
Sheet 3 of 17



1 Details At Turned Columns  
2" = 1'-0"



2 V Section At Pass Through Center  
1-1/2" = 1'-0"



3 V Section At Pass Through Side  
1-1/2" = 1'-0"

Traditional Woodworking LLC  
164 River Rd.  
Piermont, New Hampshire, 03779  
603-272-9324 FAX: 603-272-9030

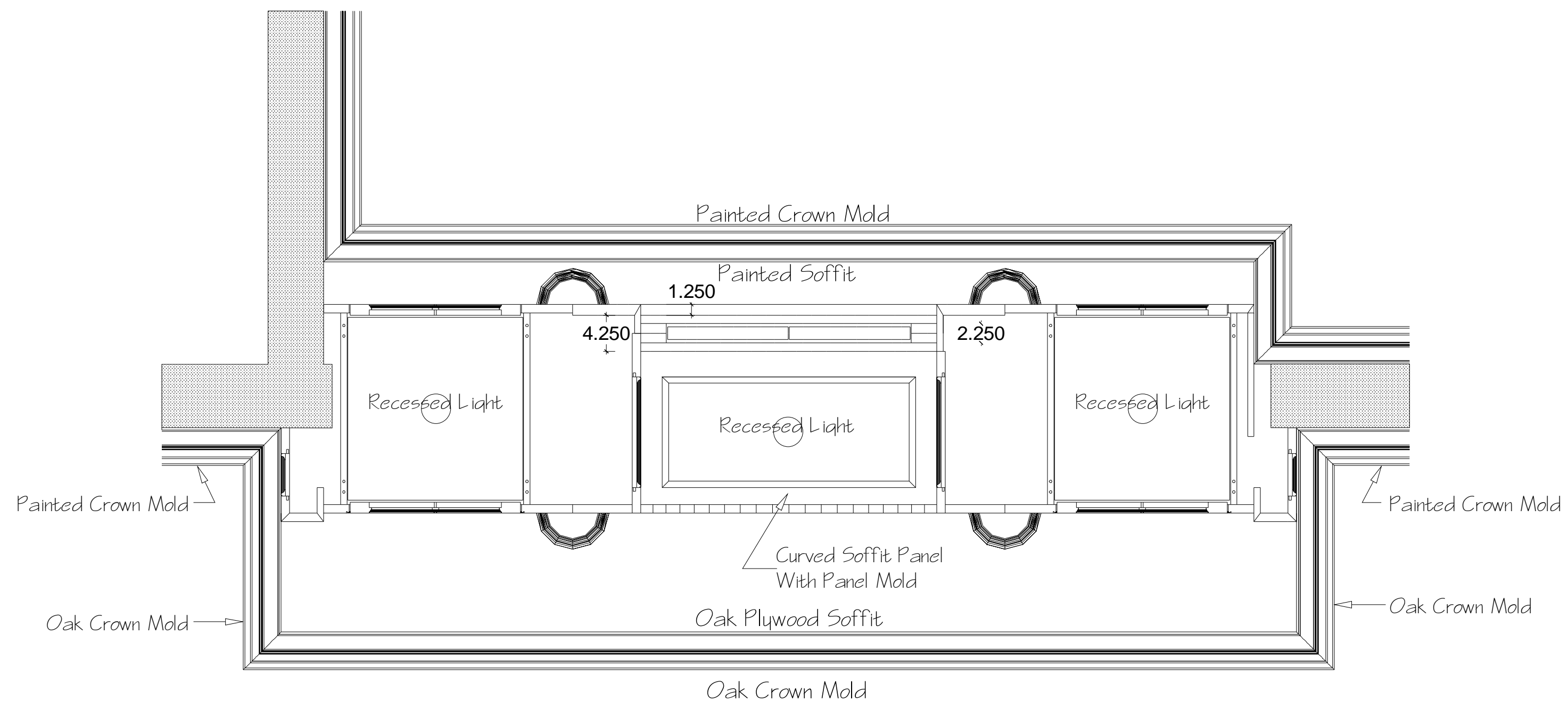
McGray and Nichols  
Thomas Mt House  
Wilmot, NH

23 July 08  
Revised:

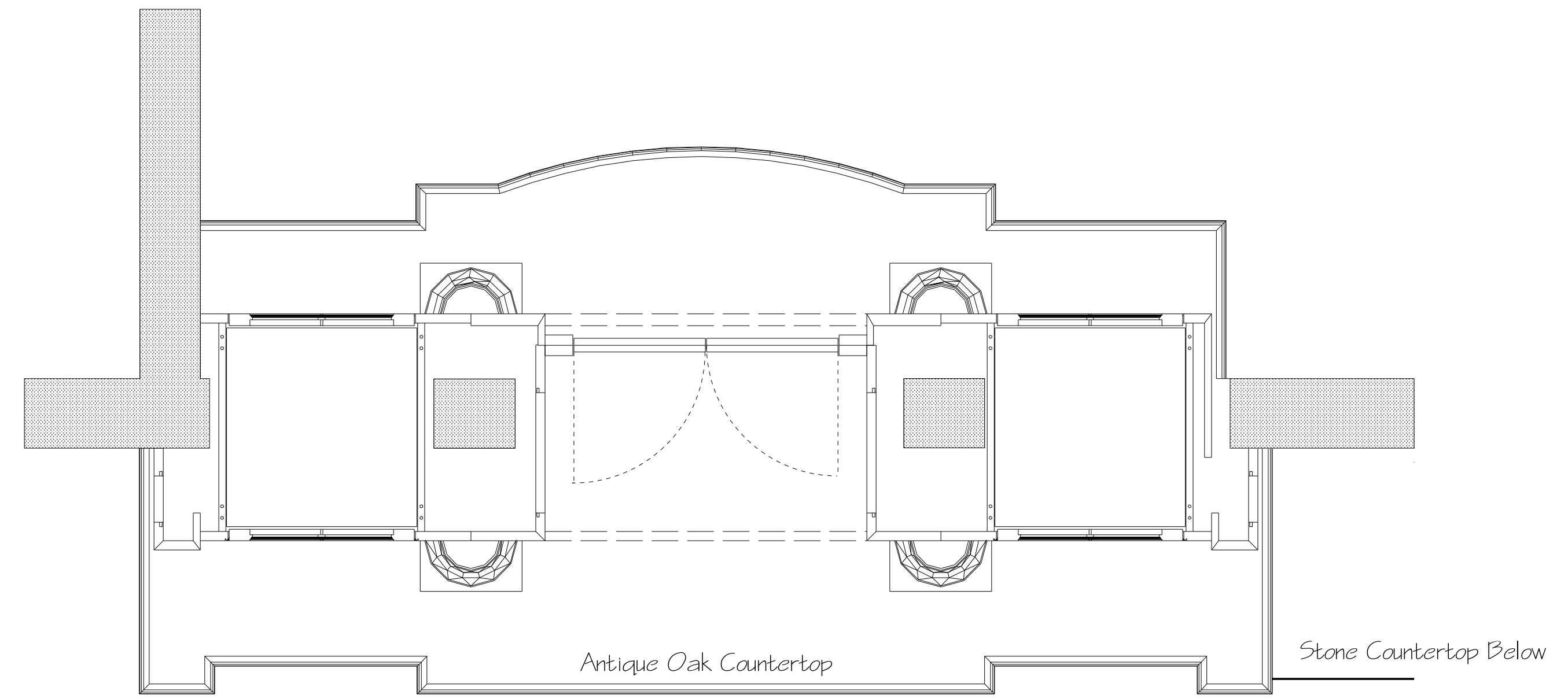
Pass-Through  
Sections

D- 1.15

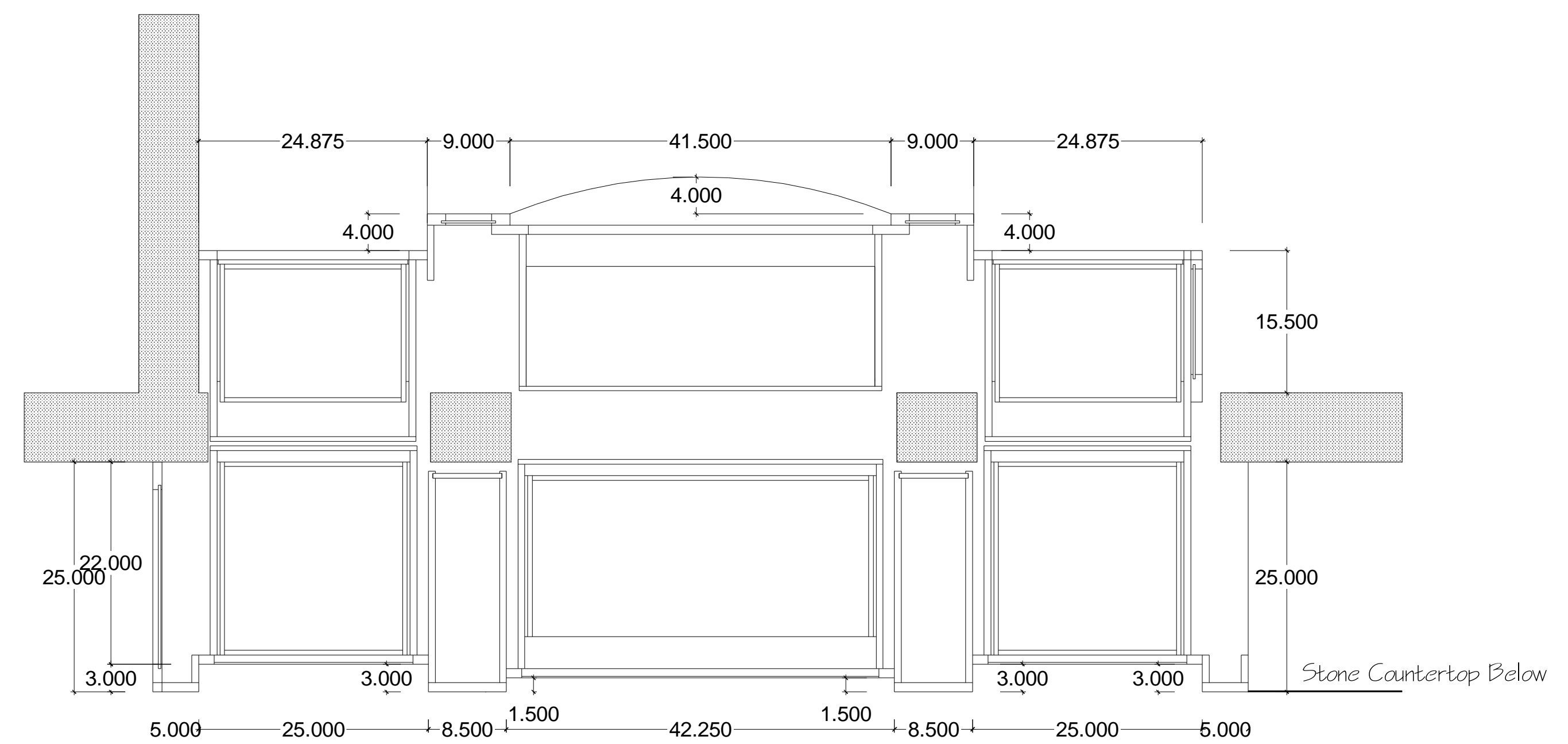
Sheet 4 of 17



1 Pass Through, Reflected Ceiling Plan  
1" = 1'-0"



2 Pass Through, Plan Above Countertop  
1" = 1'-0"



3 Pass Through, Plan At Lower Cases  
1" = 1'-0"

Traditional Woodworking LLC  
164 River Rd.  
Piermont, New Hampshire, 03779  
603-272-9324 FAX: 603-272-9030

McGray and Nichols  
Thomas Mt House  
Wilmot, NH

24 July 08  
Revised:

Pass-Through  
Sections

D- 1.16

Sheet 5 of 17