

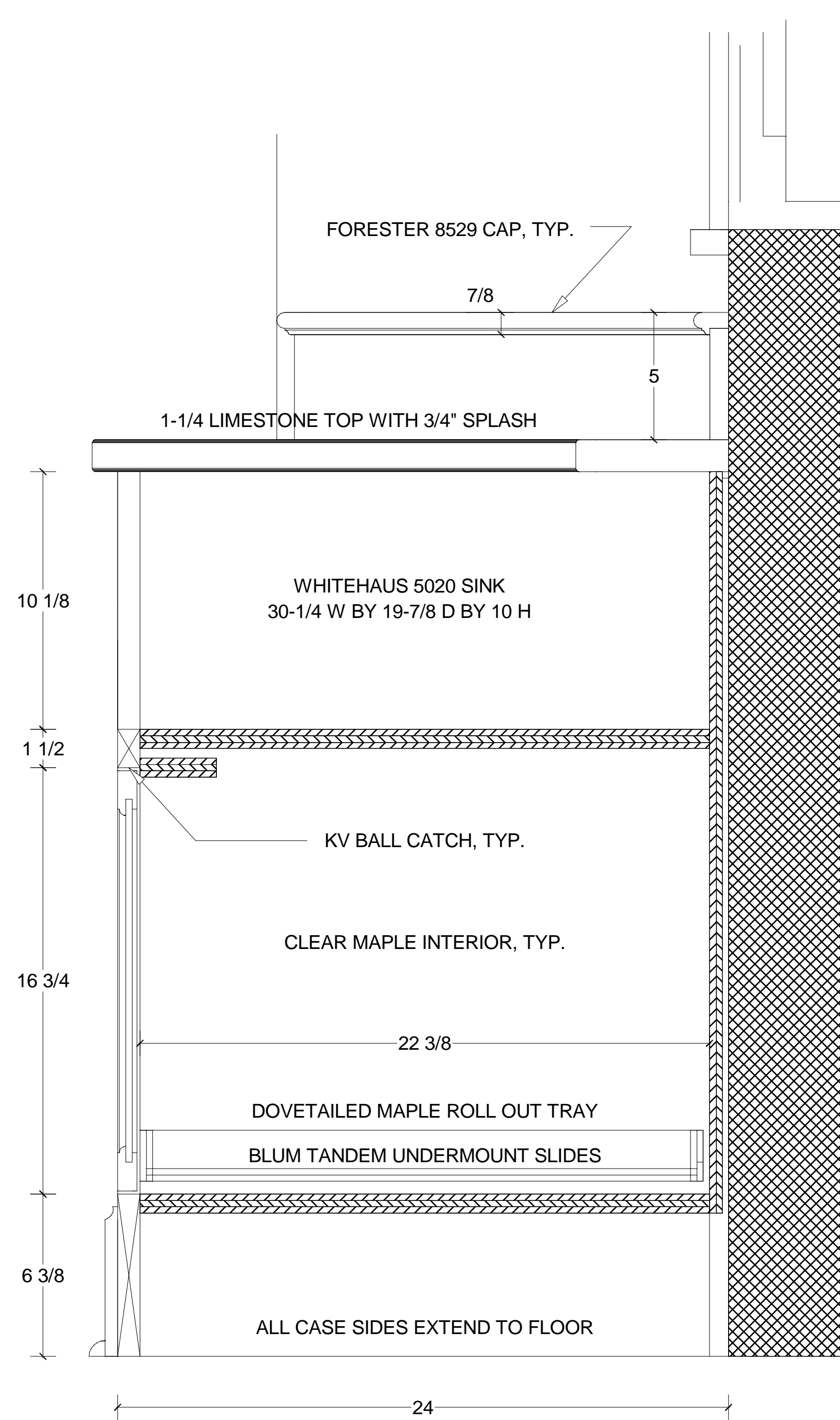
1 KITCHEN PLAN
 1-1/2"=1'-0"

Traditional Woodworking LLC
 164 River Rd.
 Piermont, New Hampshire, 03779
 603-272-9324 FAX: 603-272-9030

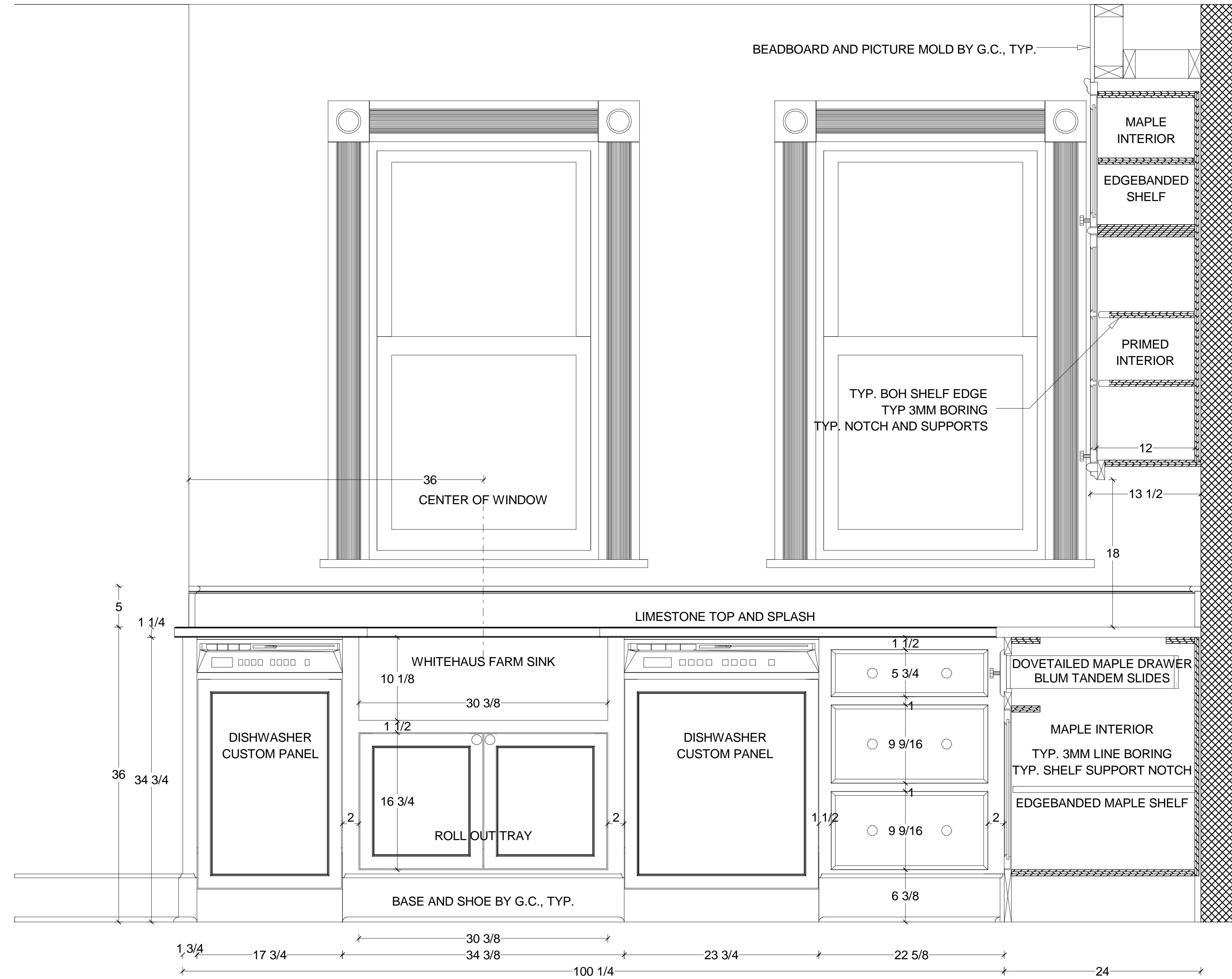
DOYLE CONSTRUCTION
 CORBIN NORTON HOUSE
 OAK BLUFFS, MA

13 JAN 2004
 Revised:
 19 MARCH 2004

KITCHEN
 REVISION 1
K-109.1



1 SEC. AT SINK BASE
3"=1'-0



2 KITCHEN, WEST ELEVATION
1-1/2"=1'-0

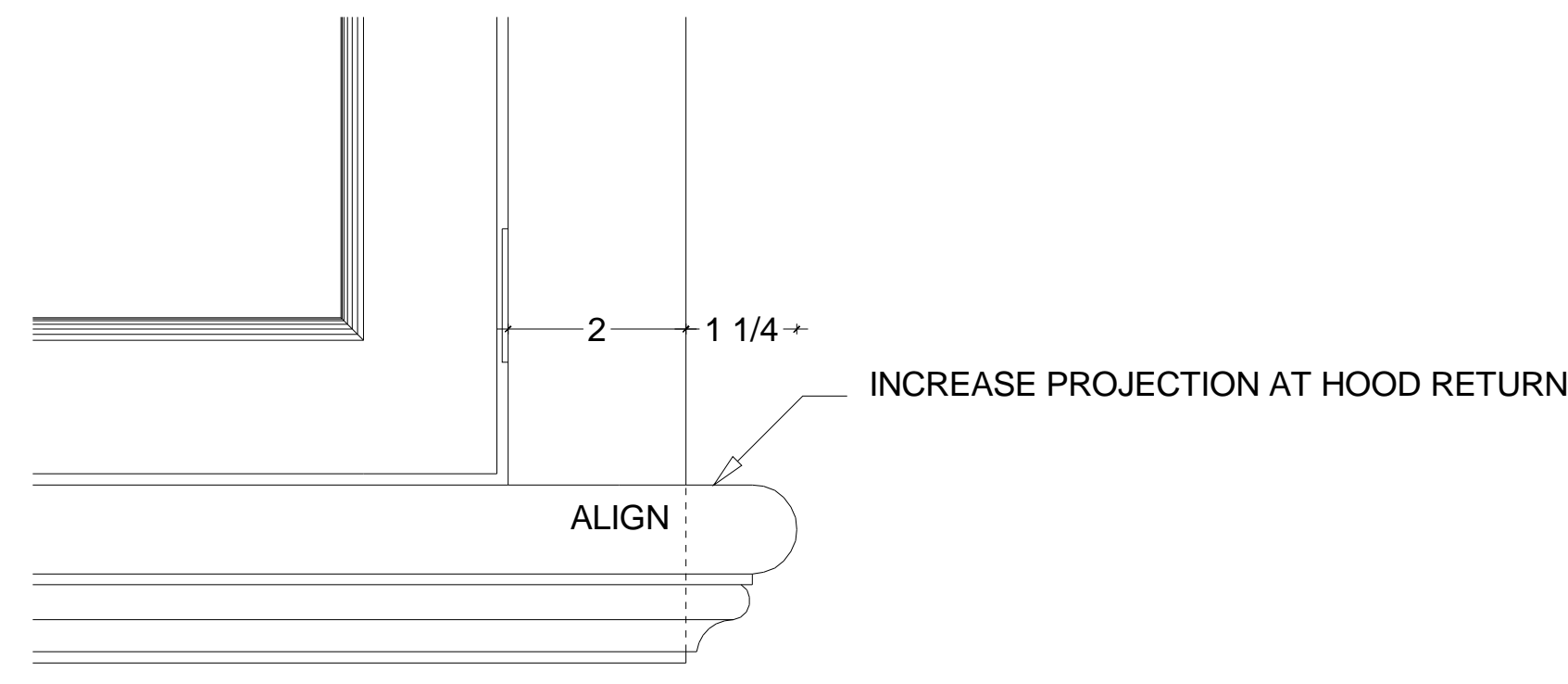
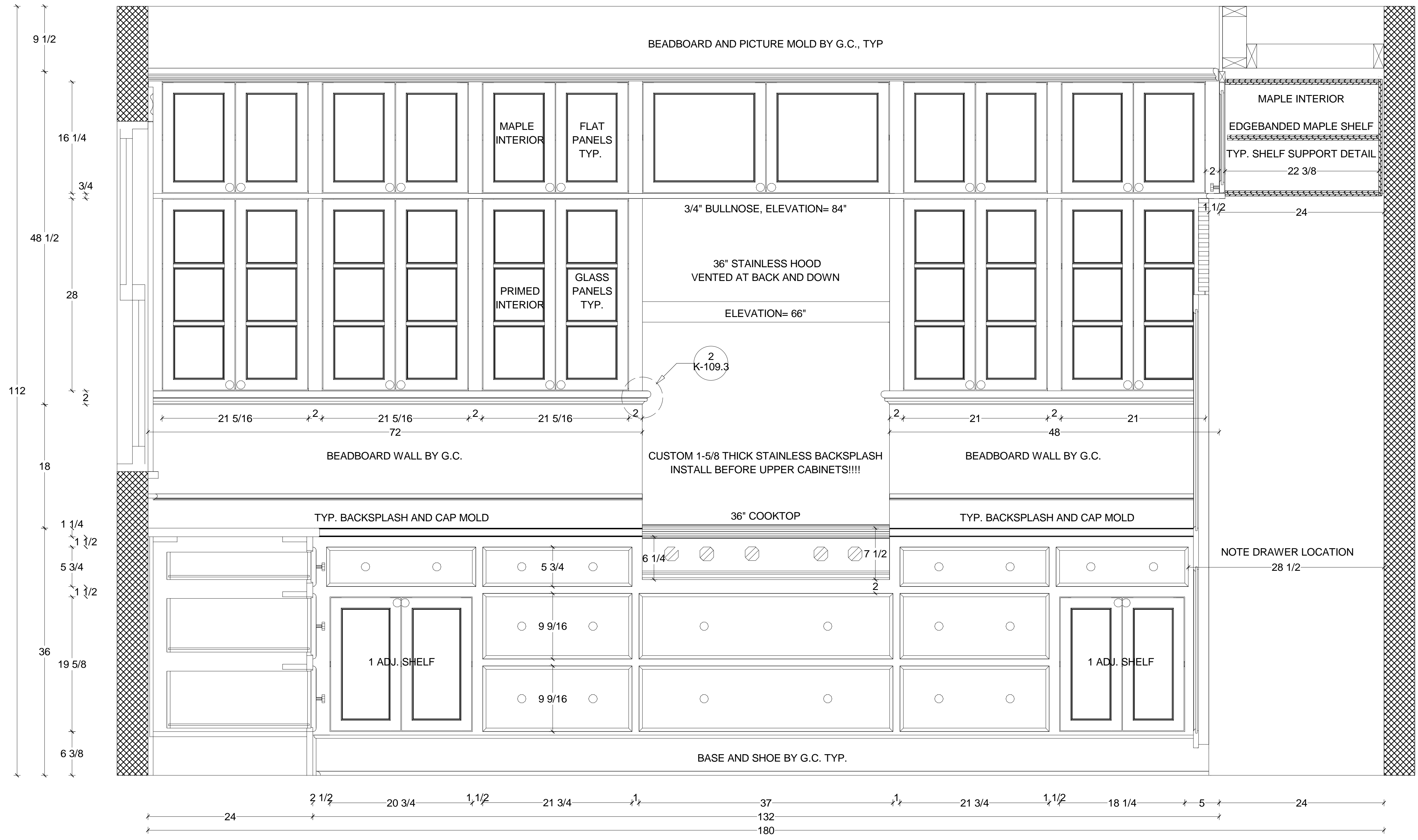
Traditional Woodworking LLC
164 River Rd.
Piermont, New Hampshire, 03779
603-272-9324 FAX: 603-272-9030

DOYLE CONSTRUCTION
CORBIN NORTON HOUSE
OAK BLUFFS, MA

13 JAN 2004
Revised:
19 MARCH 2004

KITCHEN
REVISION 1

K-109.2



2 DETAIL AT HOOD RETURN
HALF FULL SIZE

1 KITCHEN, RANGE ELEVATION
1-1/2"=1'-0"

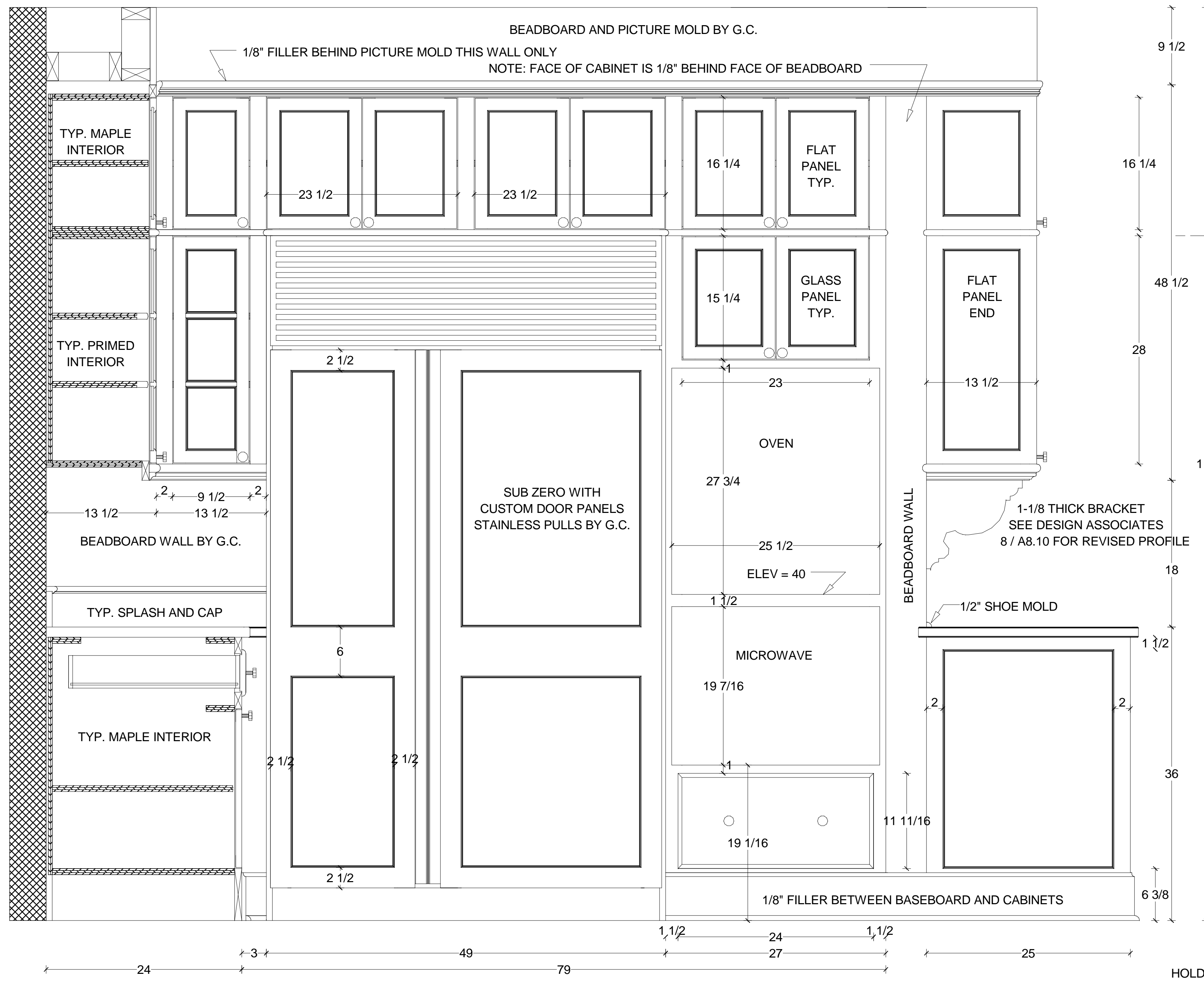
Traditional Woodworking LLC
164 River Rd.
Piermont, New Hampshire, 03779
603-272-9324 FAX: 603-272-9030

DOYLE CONSTRUCTION
CORBIN NORTON HOUSE
OAK BLUFFS, MA

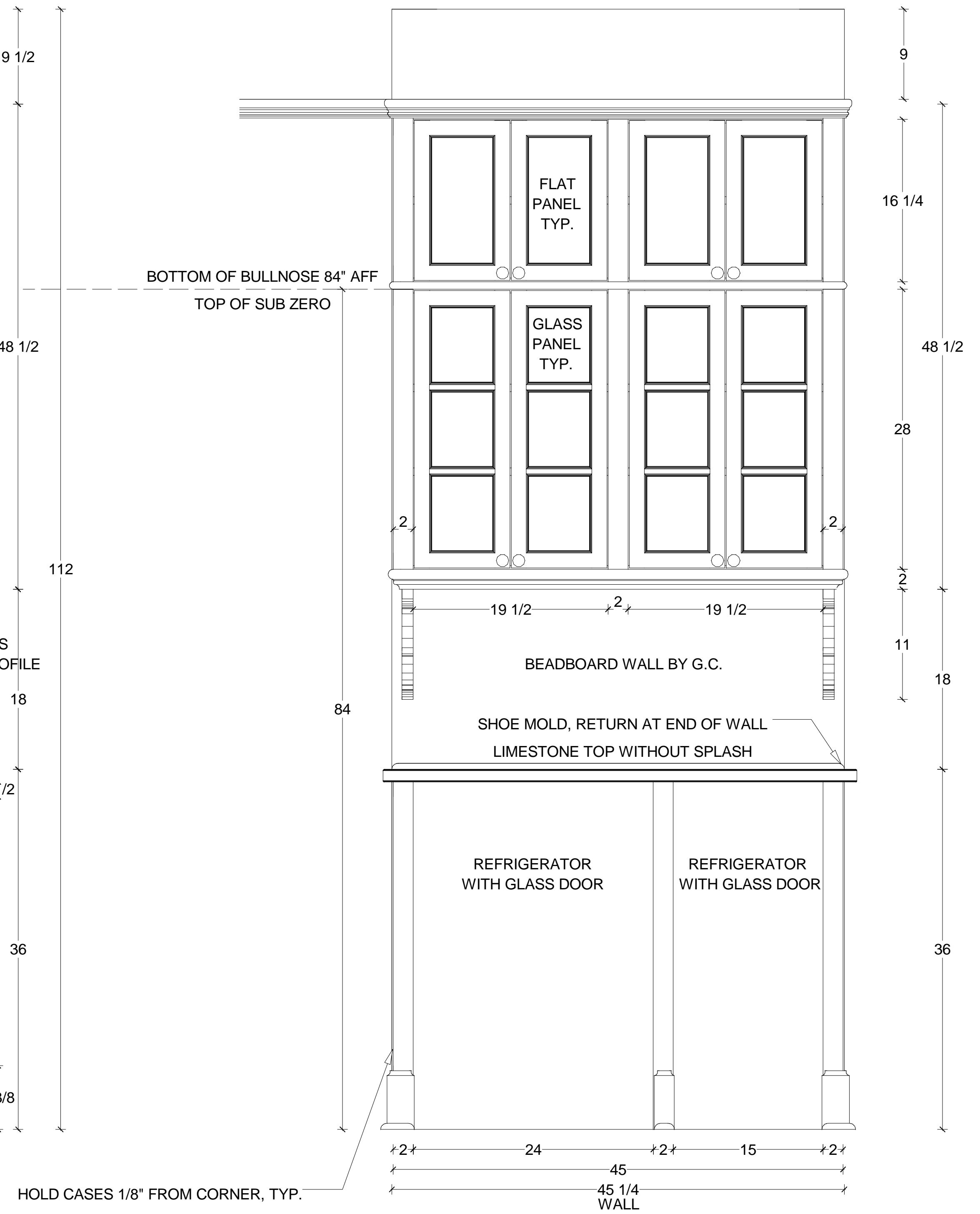
13 JAN 2004
Revised:
19 MARCH 2004

KITCHEN
REVISION 1

K-109.3



1 KITCHEN, REFRIGERATOR ELEVATION
 1-1/2"=1'-0"



2 KITCHEN, BEVERAGE CENTER ELEVATION
 1-1/2"=1'-0"

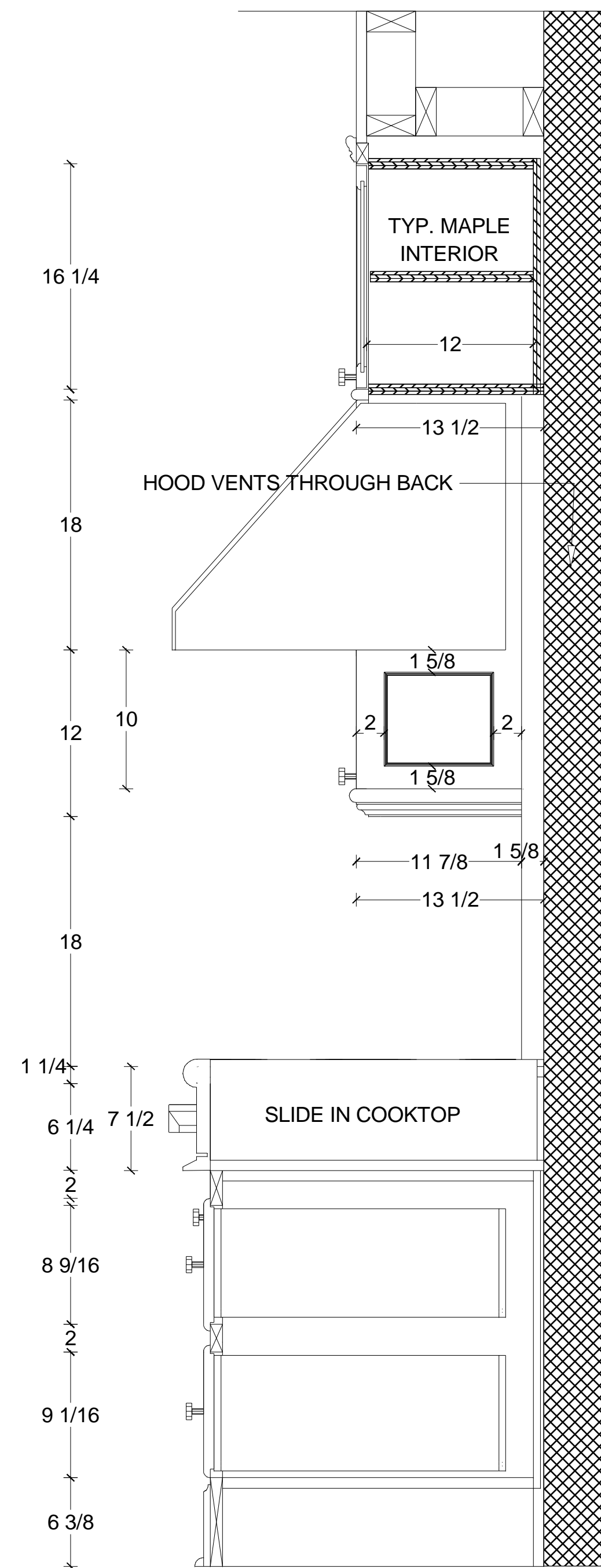
Traditional Woodworking LLC
 164 River Rd.
 Piermont, New Hampshire, 03779
 603-272-9324 FAX: 603-272-9030

DOYLE CONSTRUCTION
 CORBIN NORTON HOUSE
 OAK BLUFFS, MA

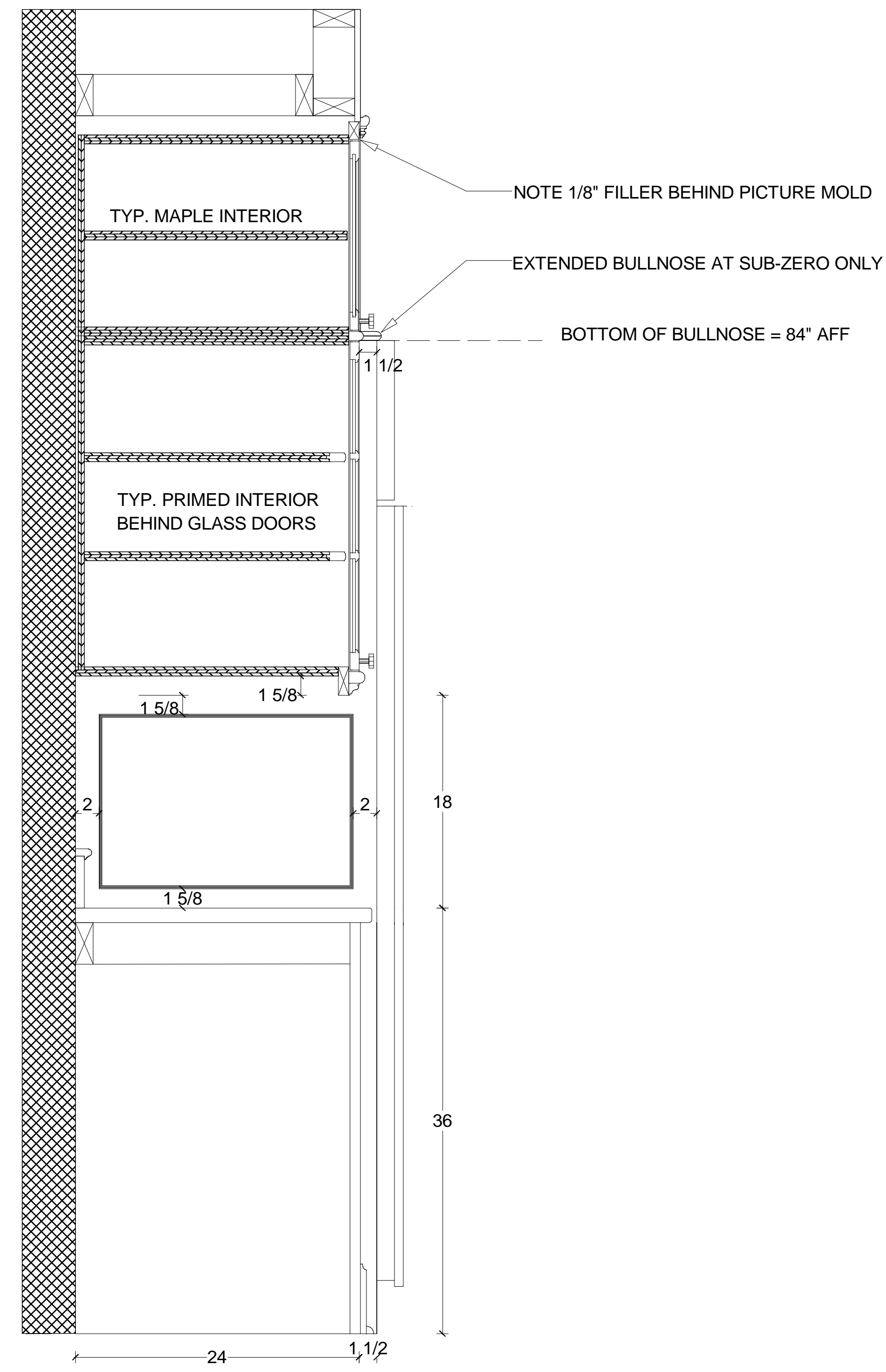
15 JAN 2004
 Revised:
 20 MARCH 2004

KITCHEN
 REVISION 1

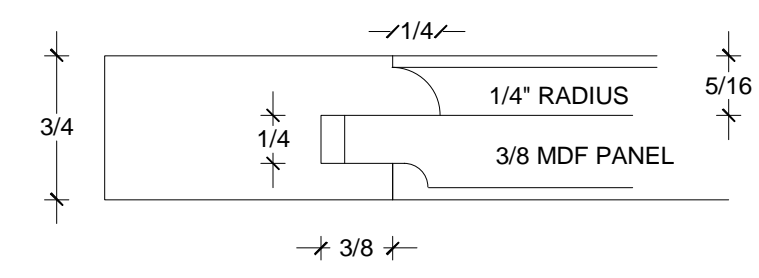
K-109.4



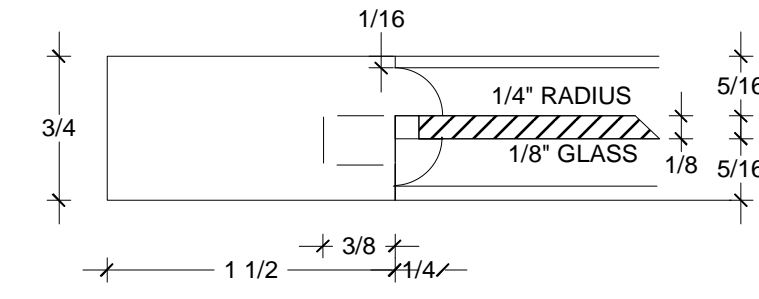
1 SECTION AT RANGE HOOD
1-1/2"=1'-0"



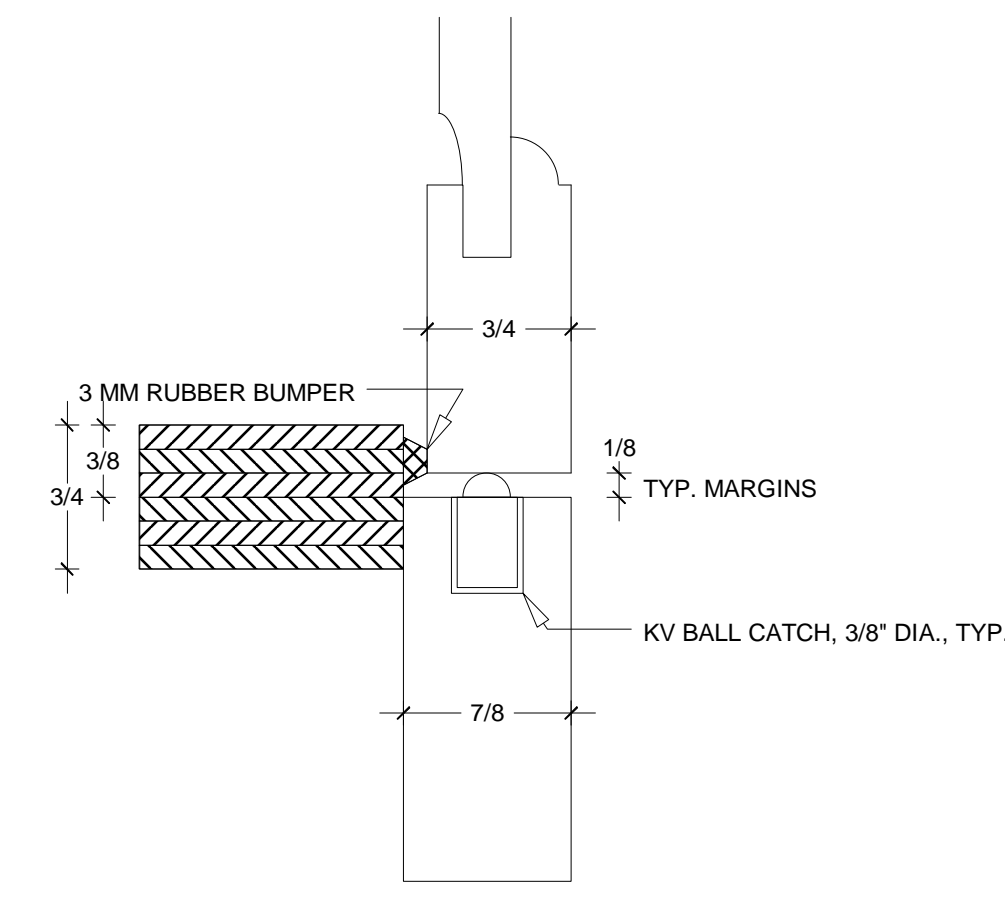
2 SECTION AT REF. SIDE PANEL
1-1/2"=1'-0"



5 SEC AT PANEL DOOR, TYP.
FULL SIZE



4 SEC AT GLASS DOOR, TYP.
FULL SIZE



3 SECTION AT BALL CATCH, TYP.
FULL SIZE

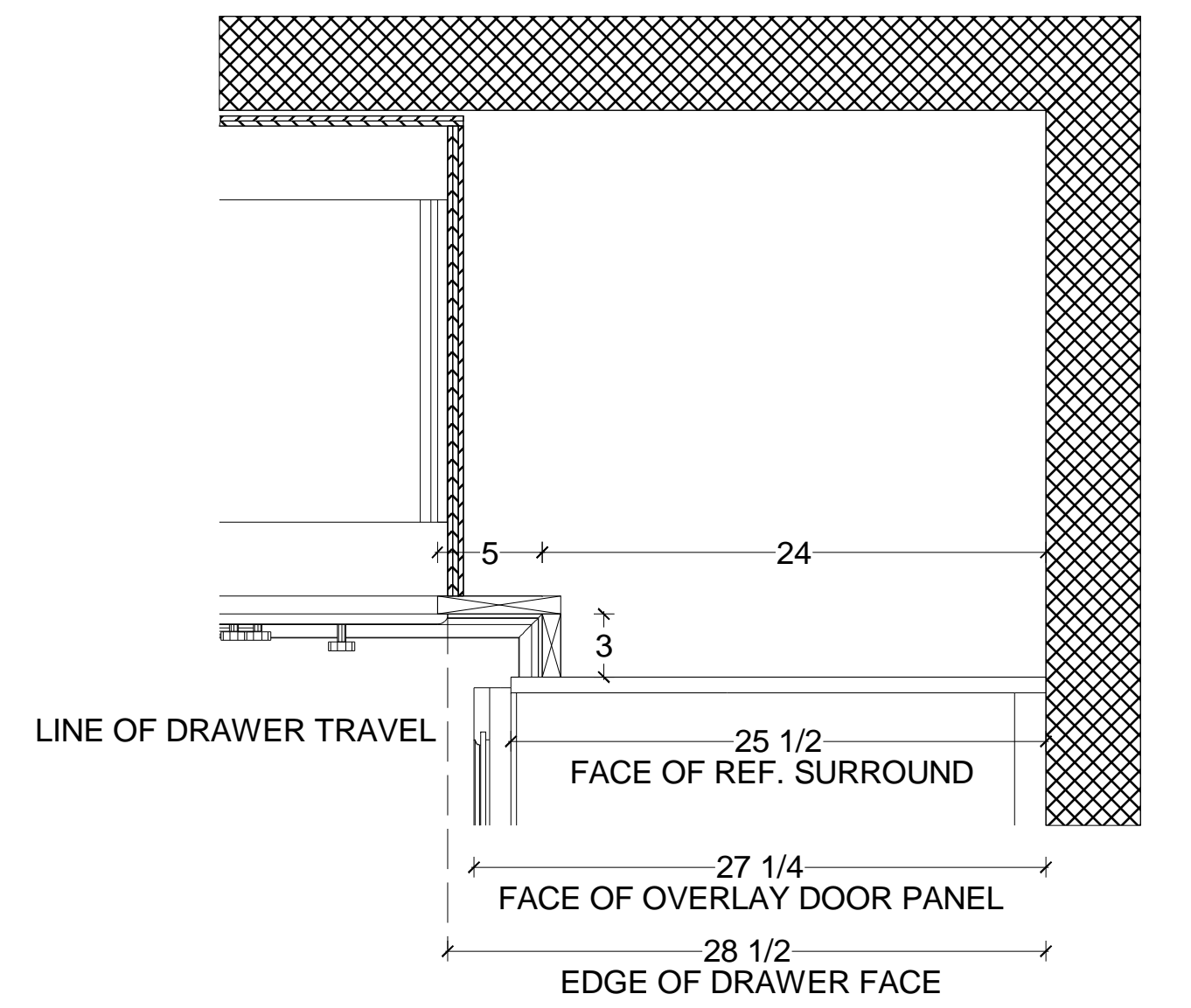
Traditional Woodworking LLC
164 River Rd.
Piermont, New Hampshire, 03779
603-272-9324 FAX: 603-272-9030

DOYLE CONSTRUCTION
CORBIN NORTON HOUSE
OAK BLUFFS, MA

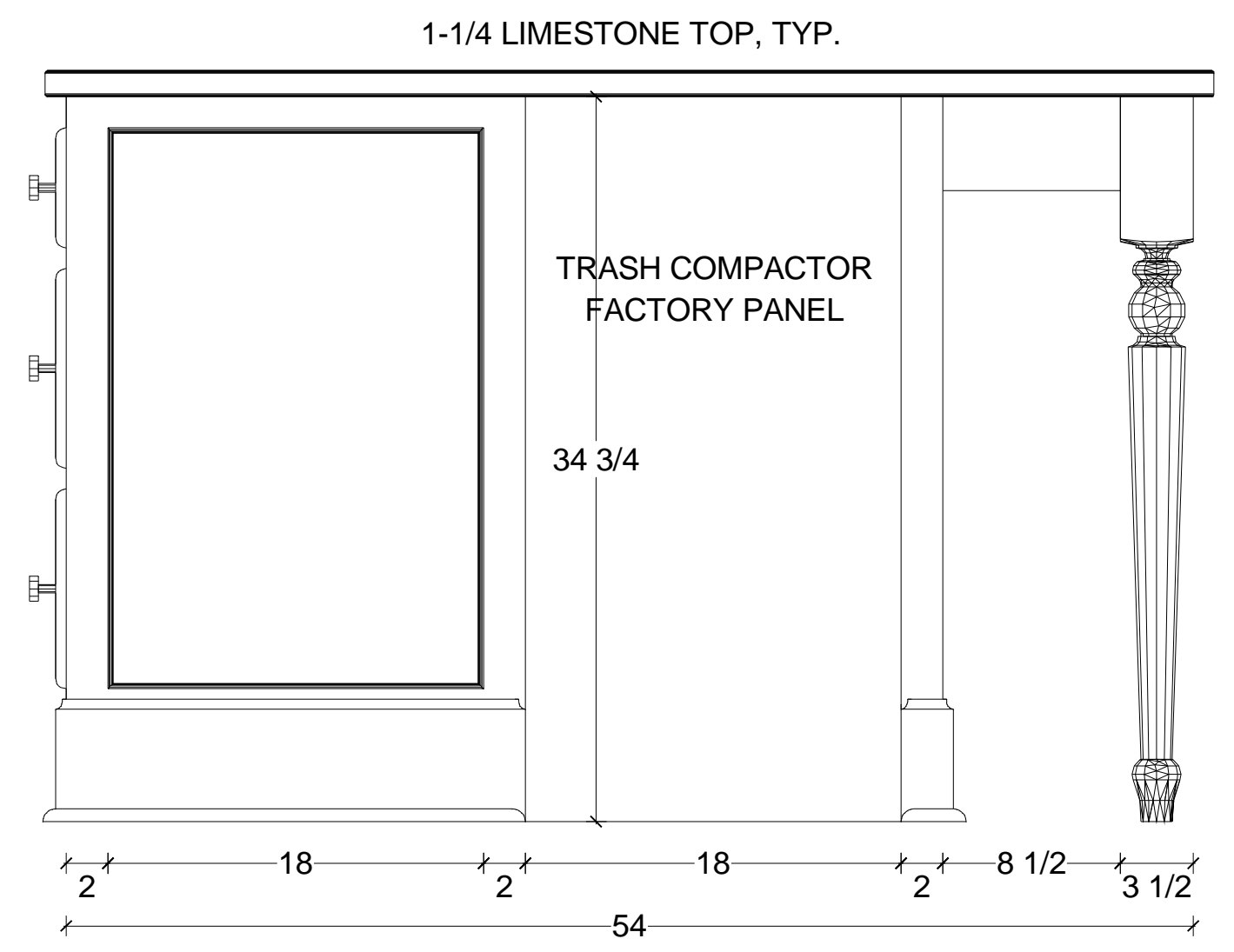
15 JAN 2004
Revised:
20 MARCH 2004

KITCHEN
REVISION 1

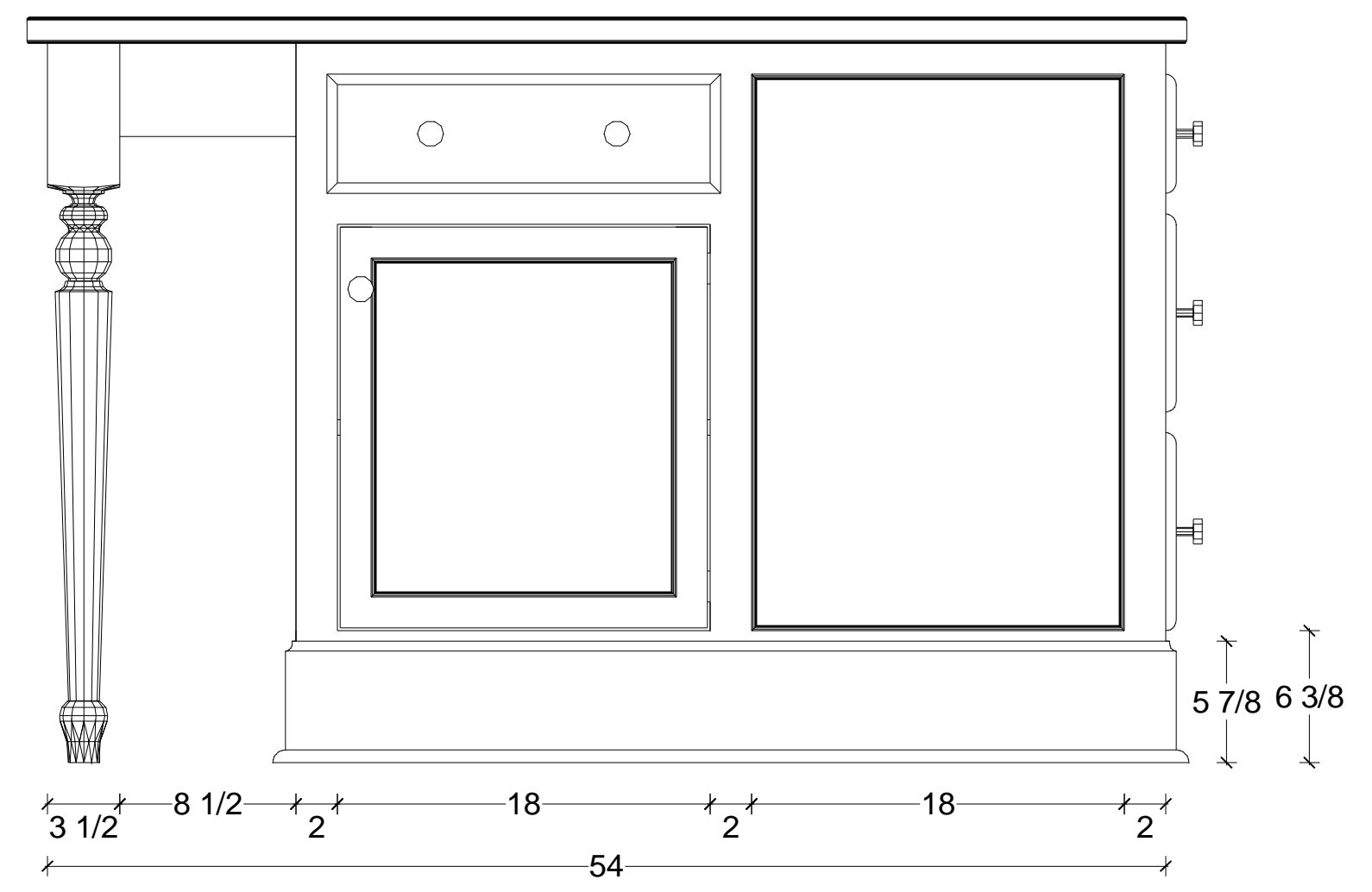
K-109.5



5 SECTION AT DRAWER VS SUB-ZERO
1-1/2"=1'-0"

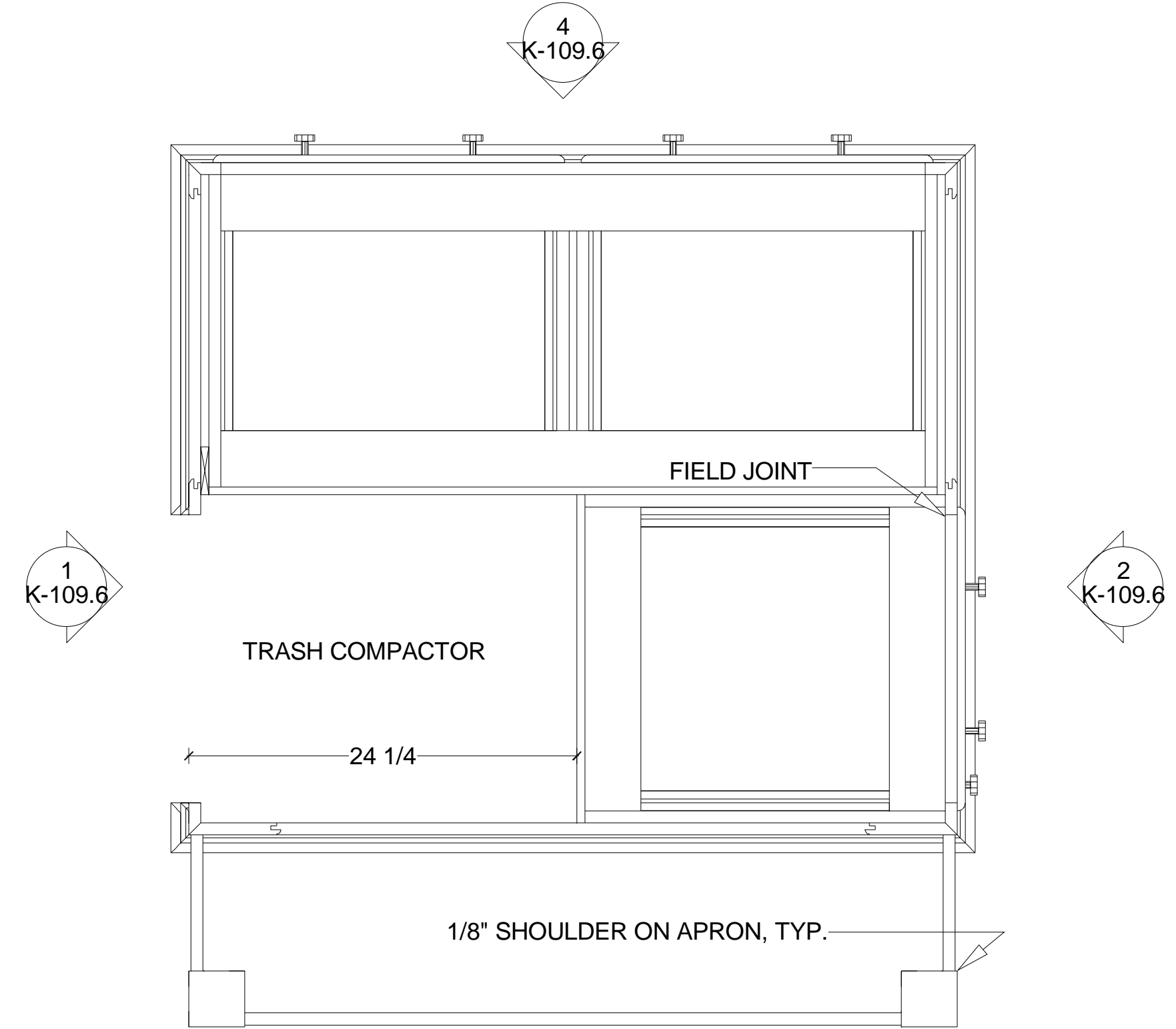


1 ISLAND, SINK ELEVATION
1-1/2"=1'-0"

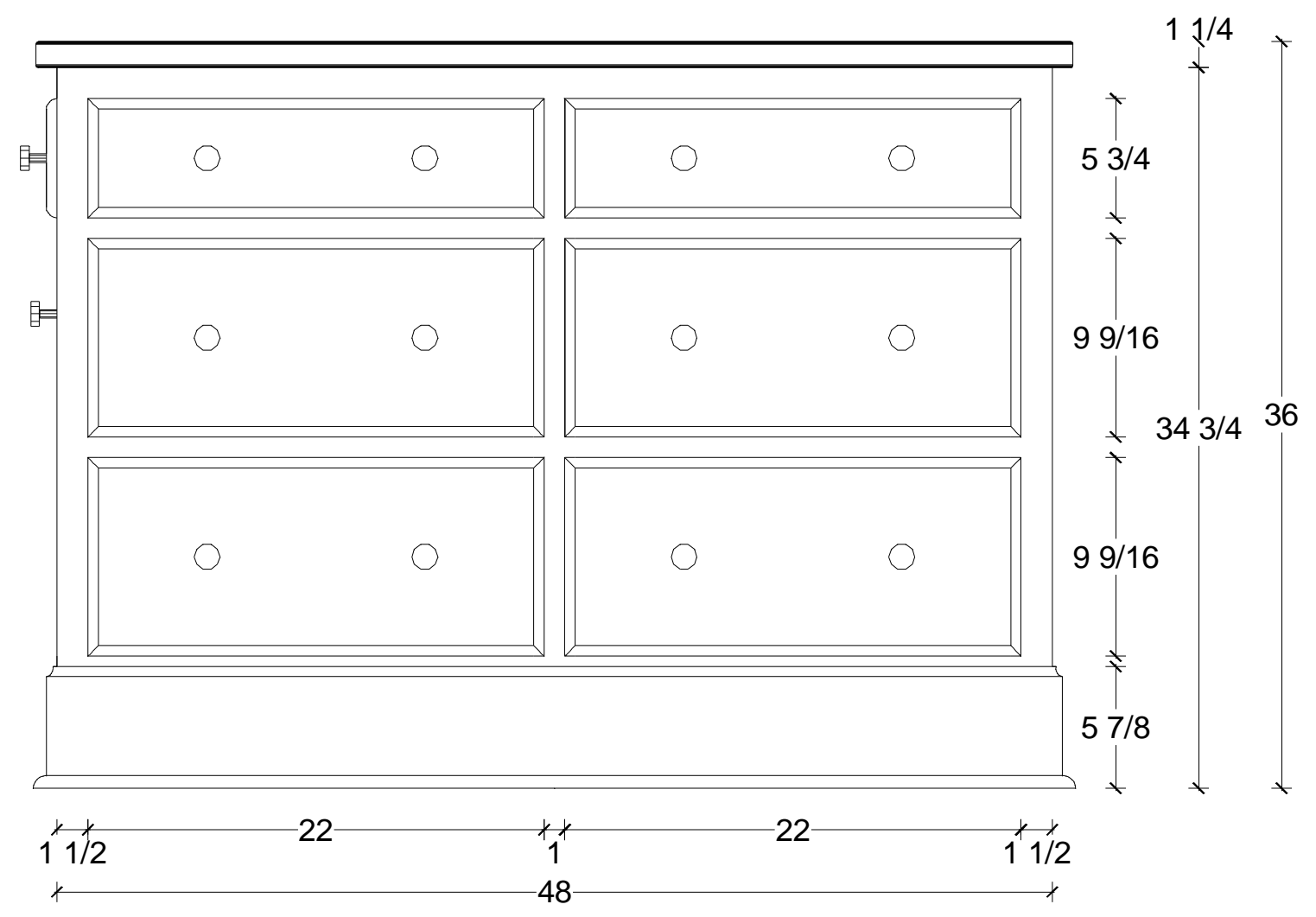


2 ISLAND, REF. ELEVATION
1-1/2"=1'-0"

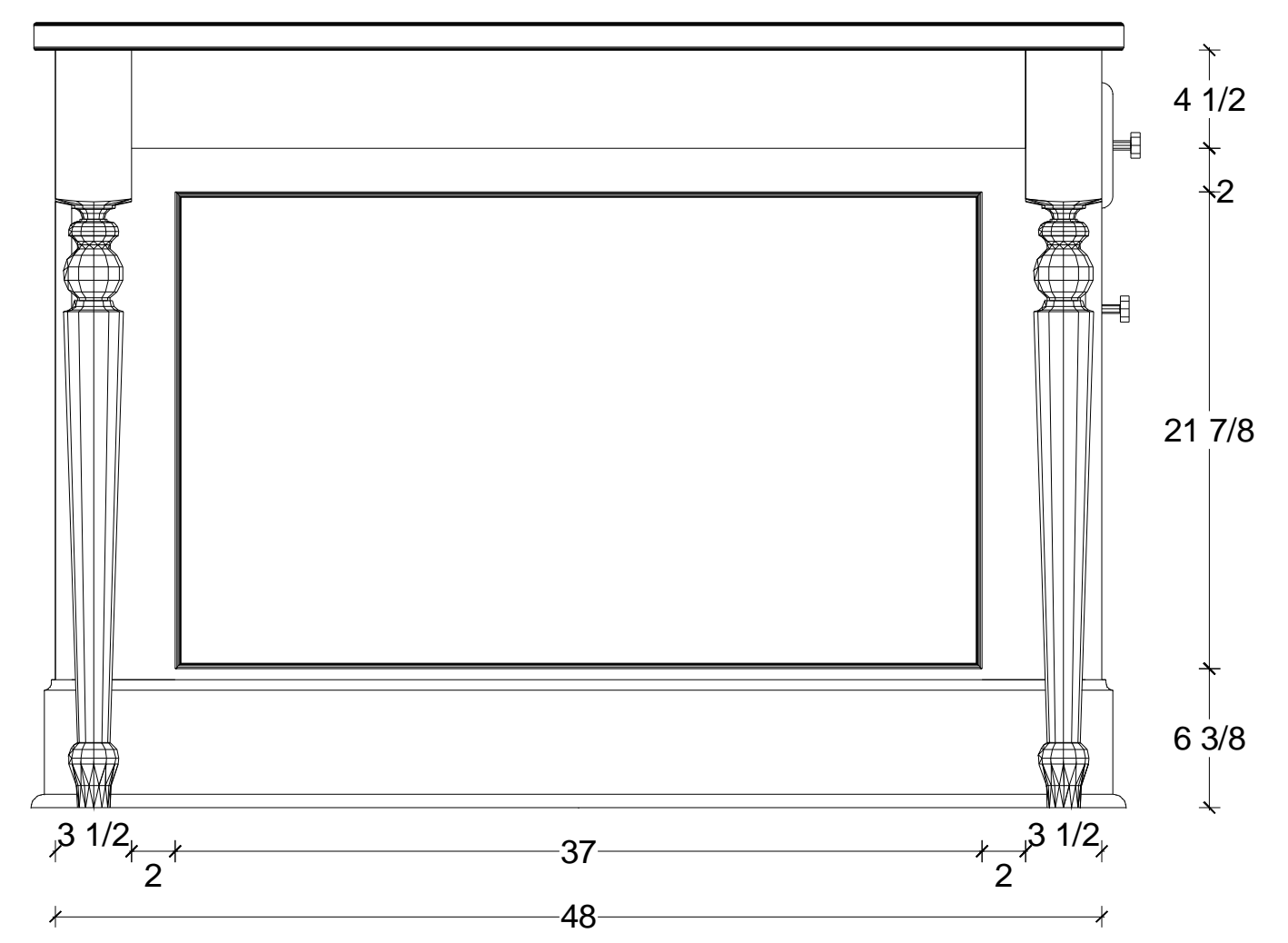
NOTES
1. SEE DESIGN ASSOCIATES 3/A8.14 FOR TURNED LEG PROFILE



5 ISLAND, PLAN
1-1/2"=1'-0"



4 ISLAND, RANGE ELEVATION
1-1/2"=1'-0"



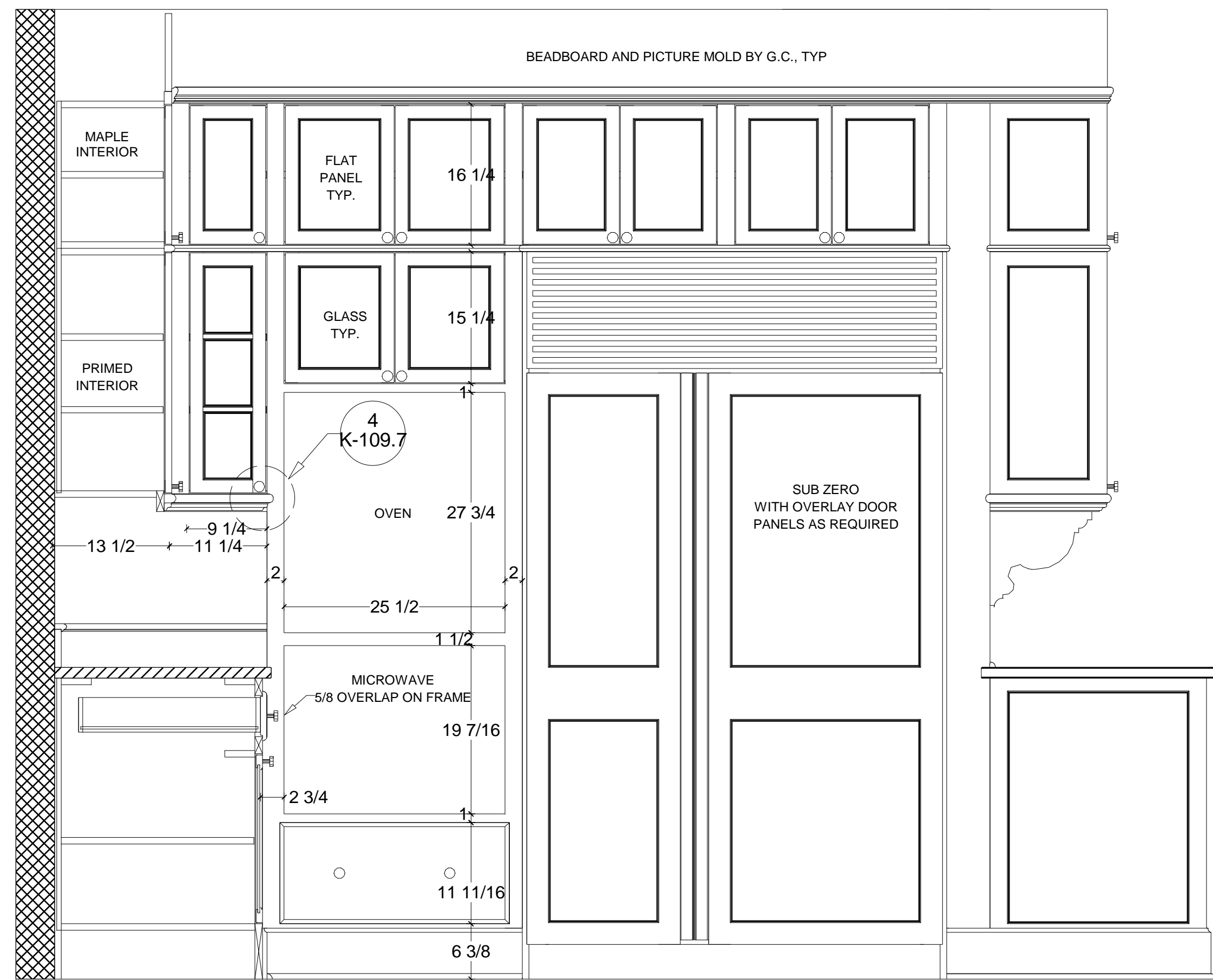
3 ISLAND, FAMILY ROOM ELEVATION
1-1/2"=1'-0"

Traditional Woodworking LLC
164 River Rd.
Piermont, New Hampshire, 03779
603-272-9324 FAX: 603-272-9030

DOYLE CONSTRUCTION
CORBIN NORTON HOUSE
OAK BLUFFS, MA

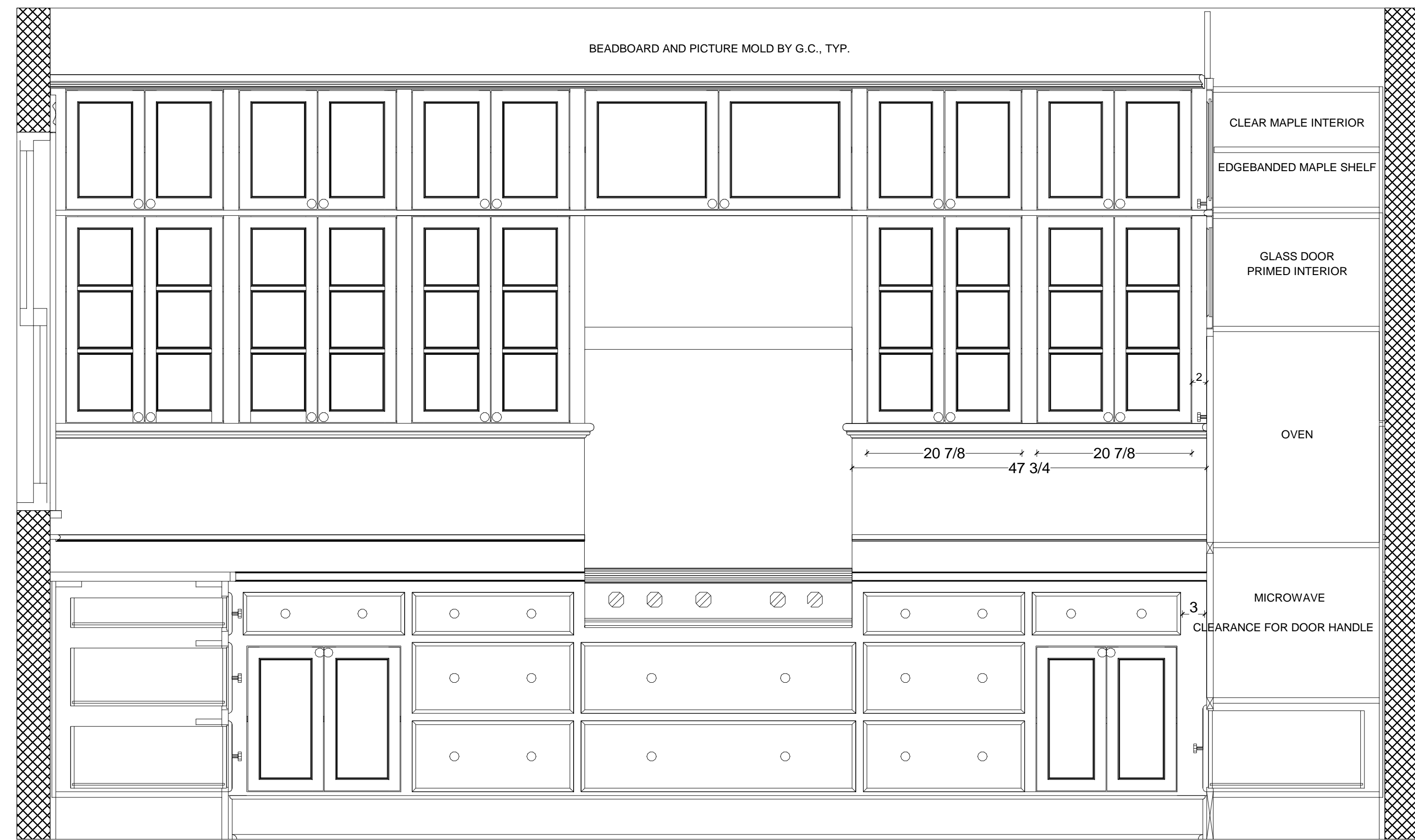
12 JAN 2004
Revised:
20 MARCH 2004

KITCHEN
REVISION 1
K-109.6



24 26 1/2 30 1/4 103 49

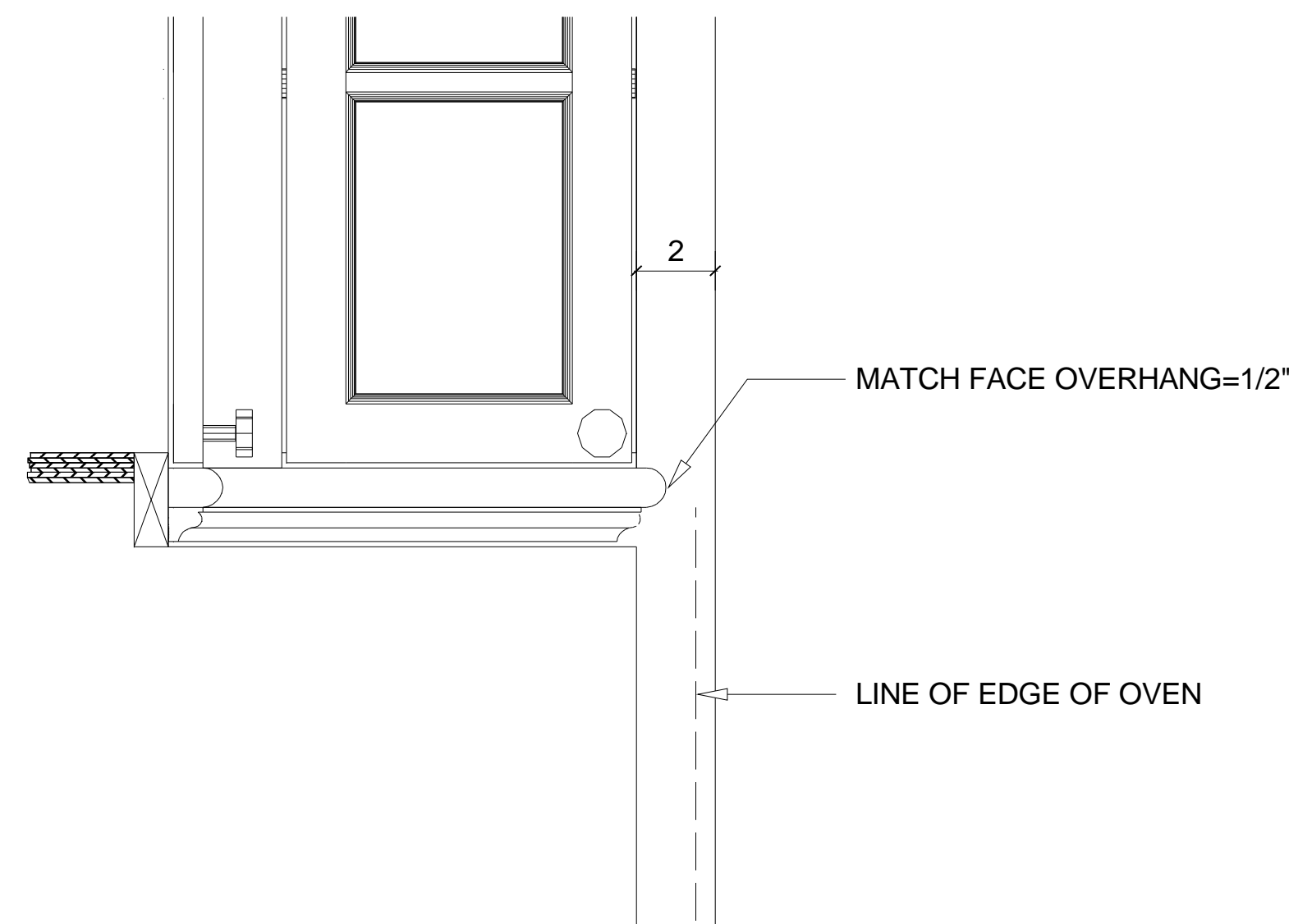
1 REFRIGERATOR REVISION
1"=1'-0"



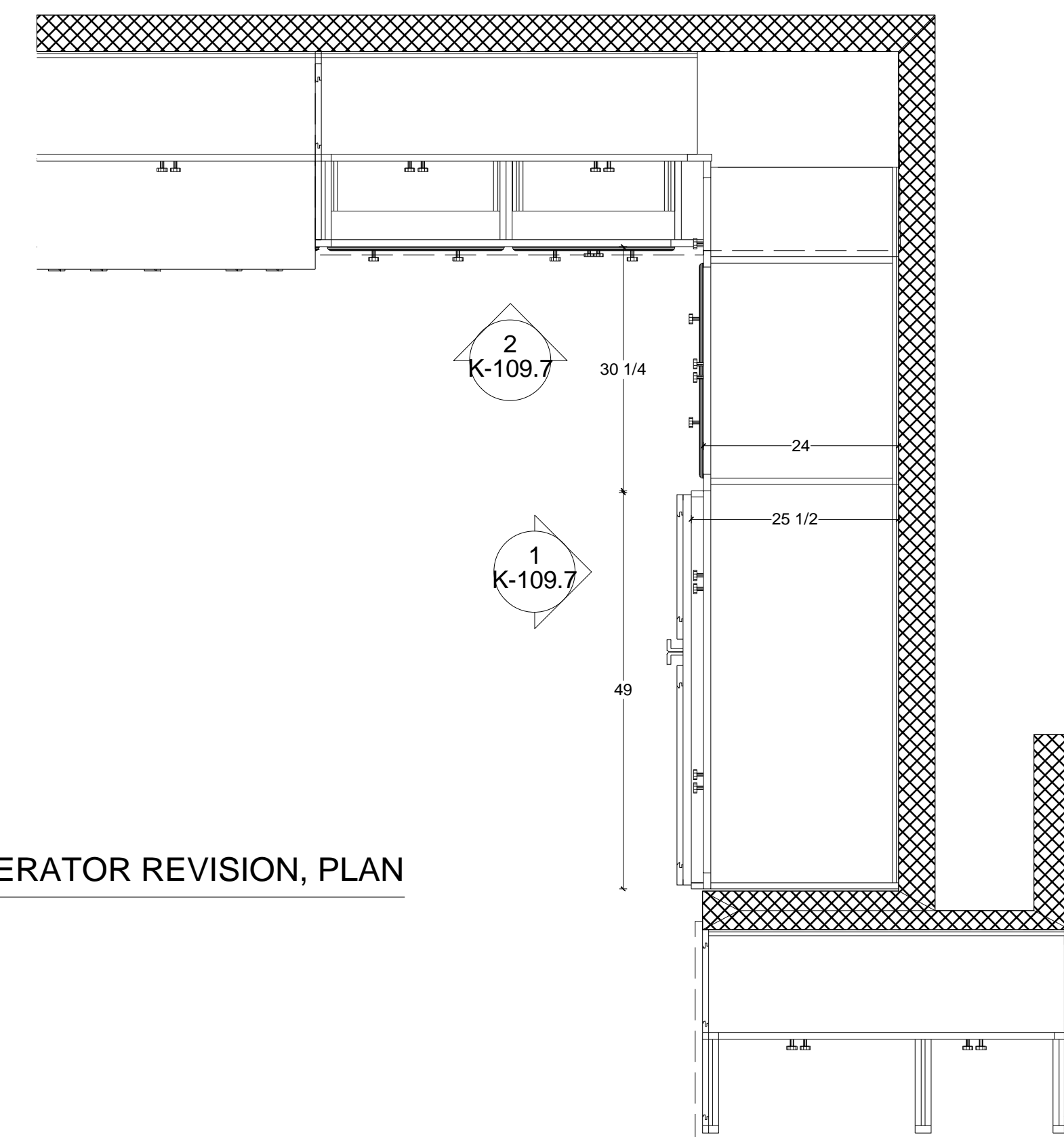
1 21 3/4 1 1/2 19 1/2 3 1/2 24

2 REFRIGERATOR REVISION
1"=1'-0"

NOTE: SEE K109.1 THROUGH K109.6 FOR ALL OTHER DETAILS AND DIMENSIONS



4 MOLDING RETURN DETAIL AT OVEN
3"=1'-0"



4 REFRIGERATOR REVISION, PLAN
3/4"=1'-0"

Traditional Woodworking LLC
164 River Rd.
Piermont, New Hampshire, 03779
603-272-9324 FAX: 603-272-9030

DOYLE CONSTRUCTION
CORBIN NORTON HOUSE
OAK BLUFFS, MA

13 APRIL 2004
Revised:

KITCHEN REVISIONS
K-109.7